

LANDCARE NSW 2022-2023



Landcare
New South Wales

Landcare NSW 2022-2023 Annual Report



Acknowledgement of Country

Landcare NSW acknowledges the Country of the Traditional Aboriginal Custodians and their lands where we live, travel and work. We offer our respect to the Aboriginal People, their Elders, Ancestors and Descendants of this Country. We further acknowledge the Traditional Aboriginal Custodians of the lands upon which Landcare NSW operates. We recognise their spiritual connection to the land, waters, and communities across New South Wales, and we are grateful for the opportunity to work on this Country.

Dr. Turlough Guerin – CEO, Landcare NSW



Contents

Who is Landcare NSW	6	Strategic Planning	17	Case Studies	40
Chair Report	8	Key Focus Areas	18	NSW Parliamentary Friends of Landcare	44
CEO Report	10	Financial Update	24	Partnership Support	46
Evolution of Landcare	12	CAT Data by Region	26	Member Benefits	47
Strategic Pillars	14	Governance	28	Members List	48
Future Vision	16	Landcare NSW Projects	30		



Who is Landcare NSW?

Landcare NSW is the peak body and voice for community Landcare in NSW.

With thousands of active Landcarers in NSW, Landcare NSW is the conduit between local Landcare communities and critical decision-makers, working to ensure the thousands of Landcare volunteers and supporters across the State can focus on what is important to them.

We provide leadership, skills, resources, and representation for those contributing to the Landcare movement by supporting our communities and the environment across the State.

We represent, promote and advocate on behalf of community-based Landcare and community-driven sustainable natural resource management in New South Wales.

We are the bridge between agriculture and the environment, promoting agricultural stewardship and conserving our natural capital.

Landcare NSW supports the community Landcare movement by partnering with State and Federal Governments, corporations, not-for-profit organisations, farming peak bodies, and other Landcare state/territory and national peak bodies.

‘Landcare’ is a community-driven approach to sustainable natural resource management, focusing on improving the environment’s resilience now and into the future.

Purpose

“We support Landcarers and our members so local communities and environments flourish.”

We enable our members to do the on-ground work that is so important in the regions and to achieve recognition for their contribution to the health of our State’s natural capital. The work of Landcarers is vital, valuable, and under-recognised. We want every person associated with Landcare NSW to feel seen, heard and incredibly proud.

Vision

Landcare in NSW is recognised by Governments, corporations, philanthropists, and the general community as the most effective, impactful, and influential ‘go-to-vehicle’ for the care of our land, environment, and communities in rural and urban areas. We aim to have one million Landcarers by 2040.

Mission

We will provide leadership, skills, and resources to empower Landcarers in NSW to have all they need to care for our land, environment, and communities.

Values

We believe in working collaboratively by building partnerships and strategic alliances. We believe honesty, integrity and respect are essential to maintaining a healthy culture. Effective leadership, flexibility, adaptability, and innovation is critical in our changing environment. We have a clarity of purpose. We are apolitical and embrace different needs and cultures, including those of our First Nations. We acknowledge that the First Nations People are the Traditional Custodians of NSW and the original Landcarers.



Chair Report

Reflecting on the past six years serving as the Chair of Landcare NSW, our peak membership body, I am particularly proud of how we have strengthened both Landcare NSW and Landcare in NSW.

The three achievements I would like to highlight from my time are:

- The transition to our new governance arrangements resulted in an improved representative process and a more unified voice for Landcare NSW.
- Greater shared clarity around what culture, structures and practices Landcare NSW wants to take forward to serve our people and the membership base and;
- How the Landcare movement in NSW joined together again to secure funding for the next four-year NSW Landcare Program and employ 83 FTE coordinators to continue supporting volunteer Landcarers across the State to grow and flourish.

Our 'job' as the peak body for Landcare members has always been and will continue to be to provide essential services that add value. I have seen firsthand in my local Tamworth region that a Landcare group's ability to get work done on their local patch comes down to good, solid support. We all know Landcare works best when the volunteers involved can focus on caring for the land and doing what they love.

Key alliances and partnerships further strengthen Landcare's work, and the co-governance, co-management and co-delivery model amplify and spread the benefits of Landcare across government, agencies, partners, and the broader community.

Partnerships between Landcare NSW and our key stakeholders are a valuable service we provide to our members through developing exclusive opportunities to work with organisations such as the:

\$58.8 million NSW Landcare Enabling Program:

The completion of the \$22.4 million NSW Landcare Program and securing \$58.8 million for the next four year Program.

\$4.4 million Creating Canopies: The completion of planting 100,000 trees and securing funding for the second phase of the project, partnering with the Department of Planning and Environment, which will deliver a further 200,000 trees by the end of 2025 in areas of Greater Sydney with less than 30 percent canopy cover. The Creating Canopies project expands on the initial project in Greater Sydney, which saw more than 100,000 trees planted from 2020-2022.

\$1.9 million People Led Preparedness project: Funded by the Australian and New South Wales governments, the program is designed to be agile and reflect the diverse needs of communities in becoming prepared for natural disaster events like fire, flood, heatwaves, storms, and landslips.

\$1.4 million Partnering in Private Land Conservation Project: Delivered in partnership with the Biodiversity Conservation Trust (2021-2023). The \$1.54 million second phase, 'Private Land Conservation Matters' was secured in 2023 and will be delivered over the next 18 months. We have achieved much, and by building a strong foundation with a bold vision, we can attain even greater success in the years to come.

The transformative effect of Landcare is not only on landscapes but on people too. I believe the next biggest challenge for Landcarers in NSW is the burnout of volunteers and how we can better manage such a major risk to the movement. Over recent years, there have been many crises requiring us to adapt and find new ways to connect as leaders and Landcarers.

With changing climate conditions and the finite resources available, preparing and planning now is crucial. We need to ensure we enable us as volunteers to weather the oncoming storms in the same way our landscapes do.

Everything we do at Landcare NSW is in the interests of our members, and nothing we do at Landcare NSW could be achieved without the support of our wonderful team. I would like to publicly thank our dedicated Board members from the past year: Vice Chair Gareth Johnston, outgoing Treasurer Hunter White, Secretary Lyn Thomson, and Directors

Rene Woods, Kathy Kelly, Bruce Rolph, Steve Bunnell, Liz Riley and outgoing Director Howard Jones.

Also, thanks to our dedicated staff at Landcare NSW, led by Turlough, who have worked tirelessly to support our members and the vital work they do on-ground for our environment and community.

What an extraordinary group of people. It has been an honour to have worked alongside you all and had the privilege of holding a leadership position in this grassroots voluntary movement. It has truly been inspiring.

I know Landcare in NSW is in safe hands, and I look forward to remaining part of the Landcare family and exploring new opportunities where I can contribute my skills, knowledge, and connections.

Stephanie Cameron – Landcare NSW Chair





CEO Report

Reflecting on the past year, it's heartening to see Landcare NSW, our State's peak body, delivering on its promises to its members.

A significant milestone was the acquisition of a \$58.8 million funding commitment for Landcare in NSW, which will run until 30 June 2027. This commitment was secured after the NSW State Election in March 2023 and subsequently included in the September 2023 budget.

It's crucial to acknowledge that this accomplishment rests on the foundations set by previous boards, Landcare Coordinators, and volunteers. Their dedication and hard work have paved the way for our present success.

Our outgoing Chair, Treasurer, and prior Landcare Team have shown tremendous foresight by investing in bolstering our governance. Effective governance is pivotal for community-led groups like Landcare NSW. Such organisations thrive due to their members' passion and have a duty to serve their communities with integrity.

A robust governance framework ensures that our mission and vision are executed with transparency and responsibility.

We've prioritised accountability and have strengthened ties with both our stakeholders and the broader community. The transition in our governance has been substantial. By focusing on operational proficiency and strategic expansion, we've reaped significant rewards. This renewed governance has won us the confidence of stakeholders, ushering in more funding and enabling us to undertake even more environmental conservation works across NSW.

Our proactive approach in cultivating relationships with the NSW Government and Parliament, paired with prudent financial management, has been instrumental in achieving these remarkable results.

To give context to our present achievements, let's trace *The Evolution of Landcare NSW: An historical perspective.*

2007 The foundation of Landcare NSW.

2011 Establishment of the National Landcare Network (NLN) with representatives from all States and Territories.

Prior to the State election, we championed the need for Landcare funding, resulting in financial support from the NSW Government.

Launch of the 'Communities in Landscape' project, funded at \$4.2m by the 'Caring for our Country' initiative from the Australian Government. This project had an overall value nearing \$10 million with additional contributions.

2014 Landcare NSW received a \$120,000 grant from The Vincent Fairfax Family Foundation (VFFF) to hire an Executive Officer. This role was pivotal in establishing the NSW Parliamentary Friends of Landcare and advocating for State funding.

2015 Inception of the NSW Parliamentary Friends of Landcare (PFL).

2015 Landcare NSW and Local Land Services formalised a partnership with a Memorandum of Understanding, creating a Joint Management Committee.

Our advocacy efforts culminated in the Local Landcare Coordinator Initiative, drawing in \$15 million over three and a half years for coordinator roles and support.

2017 National funding secured for NLN, allocating \$100,000 specifically for Landcare NSW.

2018 We presented a compelling \$32 million business case to the NSW Government, backed by rigorous evidence and advocacy through PFL.

2019 Commitments from both major political parties before the election.

A commitment of \$22.4 million over four years from the NSW Government, managed jointly by Landcare NSW and Local Land Services.

Launch of the NSW Landcare Program 2019-2023, introducing an Aboriginal Engagement Manager and funding for 83 part-time Landcare Coordinators.

2021 Transition to a company structure with bolstered governance and wider regional representation.

2022 Inclusion of a First Nations non-executive director on our board and release of our Reconciliation and Treaty Statement, reinforcing our commitment to reconciliation.

2023 In March 2023, our strategic advocacy yielded a \$58.8 million funding commitment for Landcare in NSW, ensuring support until 30 June 2027.

From 2014, across three election cycles, Landcare NSW has secured over \$100 million in State funding or commitments. This funding has not only benefitted the government and regional organisations but also Landcare NSW and its members, leading to tangible results on the ground.

Accomplishments of 2022-2023

In the last year, we embarked on and concluded multiple initiatives:

Collaboration with the NSW Department of Planning and Environment

Teamed up with Greater Sydney Landcare to plant 100,000 trees between 2020-2022 and committed to plant a further 200,000 trees from 2022-2025 in Sydney through the Creating Canopies program.

Partnership with the Emergency Services Agency and NSW Reconstruction Authority

Secured \$1.9 million to pioneer the People Led Prevention Program, championing the grassroots Landcare model to prepare for natural disasters.

Private Land Conservation Program with the Biodiversity Conservation Trust (BCT)

Engaged 2635 people, held 78 field days, and hosted 149 networking events. We've been awarded funds for the \$1.5 million-valued Stage 2, called Private Land Conservation Matters.

'Eat Dirt' Resilience Project

A successful initiative at Bellingen High School, reinforcing our commitment to community resilience and setting the stage for incorporating grassroots Landcare into school curriculums.

Landcare NSW State Gathering in May 2023

This gathering drew 180 Landcarers, including the NSW Minister for Agriculture, Minister for Regional New South Wales, and Minister for Western New South Wales, The Hon. Tara Moriarty, MLC

'Trees in the House' Event

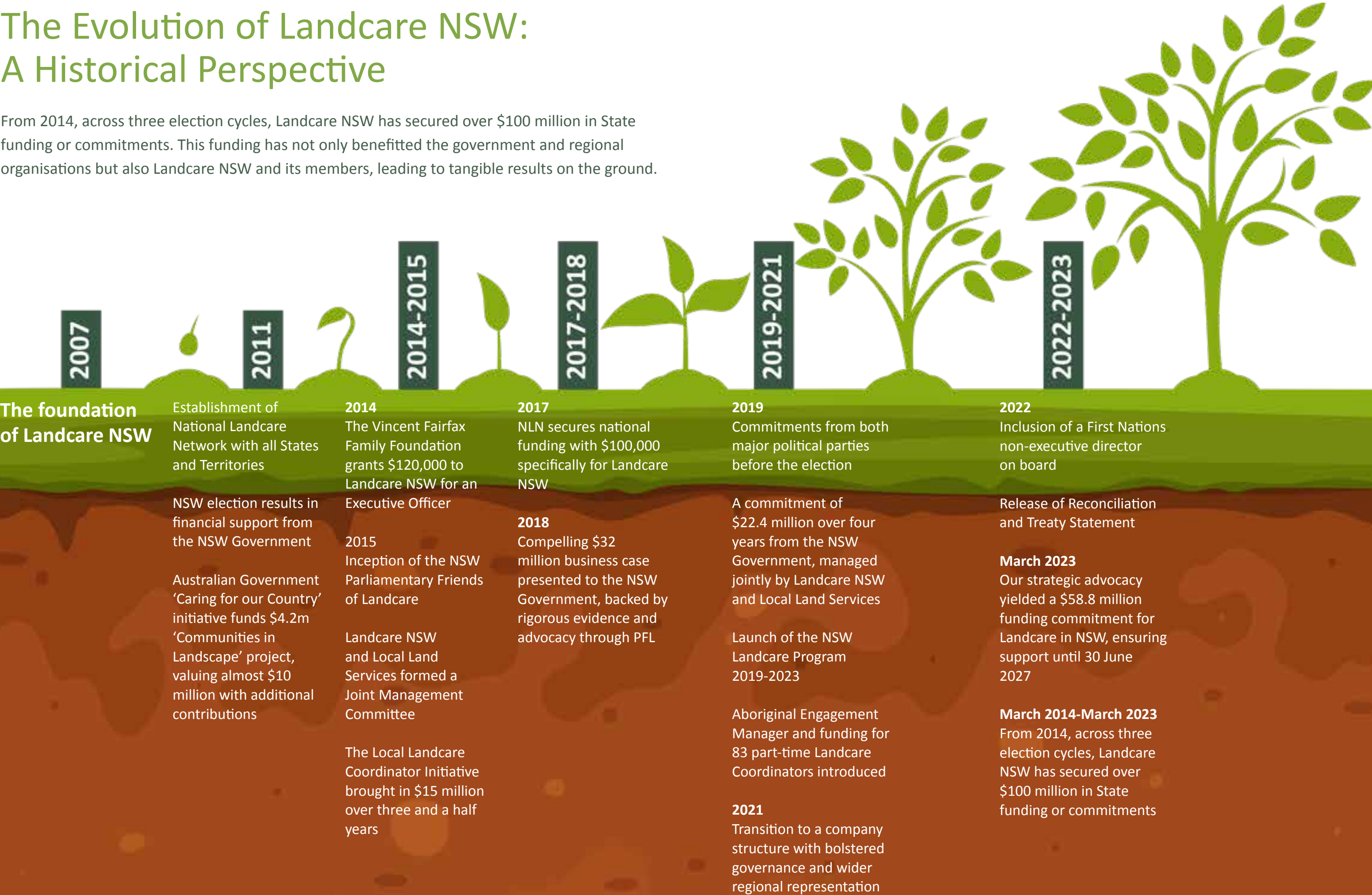
Over 90 representatives from government and business attended this event, marking the largest turnout since its inception in 2015.



Dr. Turlough Guerin – CEO, Landcare NSW

The Evolution of Landcare NSW: A Historical Perspective

From 2014, across three election cycles, Landcare NSW has secured over \$100 million in State funding or commitments. This funding has not only benefitted the government and regional organisations but also Landcare NSW and its members, leading to tangible results on the ground.



Strategic Pillars

Landcare NSW has a simple purpose:

We have maintained our strategic pillars and they will remain unchanged through until 2027. We have retained many of the specific success factors for the new five year strategic plan. We will review the plan annually and continue to check that it remains relevant to the future success of the organisation.

Strategic Pillar/Goal 1 – Strengthen Our Capability

Secured our largest-ever commitment to a State-based Landcare Program. We were successful in securing funding for a disaster preparedness program and we will further pursue this over the coming four years.

Strategic Pillar/Goal 2 – Member Centred

Progressed the goals set, including the membership program.

Strategic Pillar/Goal 3 – Position, Profile and Presence

Secured the largest attendance to date for a PFL meeting in 2023, and now have more than doubled our membership in the past year to 70 members.

Strategic Pillar/Goal 4 – Working Better Together

Successfully completed the Governance Project, ‘Connecting Up Landcare’, concluding a major program of work to link the multiple levels of groups together in Landcare in NSW. We have rekindled relationships with organisations including the NSW Department of Primary Industries.



STRENGTHEN
OUR CAPABILITY



MEMBER
CENTRED



POSITION,
PROFILE, PRESENCE



WORKING
BETTER TOGETHER

Future Vision

Empowering Landcarers

We are committed to empowering every Landcarer to do what they’re passionate about. Our aim is to assist groups in securing essential funding and boosting the number of hands-on-deck ready to bring positive change on-ground.

Our Core – Our Members

Landcare NSW thrives when we place our members at the forefront. We intend to amplify the value of Landcaring in every aspect. By doing so, we can simplify the process of gaining funding, attracting fresh faces, championing agricultural stewardship, and conserving our environmental wealth.

Our Goal?

One million Landcarers by 2040 – uniting those who are committed to protecting our environment.

Envision a community where 1 in every 10 identifies as a Landcarer.

Strategic Planning for the Next Five Years



EASY COLLABORATIONS

We will invest in our culture to ensure we are a good collaborative partner and the workplace of choice.



TRUST BUILDING

It is about reinforcing trust within our team, coordinators, our State Advisory Council, boards, and all our partners.



NATIONAL CONVERSATIONS

Introducing more value to conversations about land conservation and sustainable agriculture.



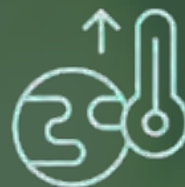
FINANCIAL VISION

We are looking into sustainable financial models, securing new revenue sources, and implementing solid business strategies.



STRATEGIC ROLE

Pinpointing our strategic position in the natural capital supply chain, maximising our value to the NSW Government and emerging ecosystem service markets.



PREPARING FOR THE UNPREDICTABLE

Shifting our focus to support communities and landscapes as they prepare for natural disasters.



Key Focus Areas

1. Digitalisation

Simplicity in processes means more time for doing what matters. We will find ways to improve how we gather data and share knowledge and event information among our community.

Streamlined reporting and improved communications will make it much easier to interact with our partners and stakeholders. This includes gathering the insights and positive stories we need to tell our story and engage potential partners and funders in a way that does not burden members with administrative details.

This will allow our members to get on with what they are passionate about – caring for the land. We'll start by mapping out our current digital assets and forecasting our needs and those of our grassroots members and partners.

Then, we'll co-design an approach that will deliver what our members and partners need to deliver on-ground outcomes. This work will ensure that the approach we agree on can be scaled. To move from the current system to a more user-friendly, streamlined design, we will develop a transition plan, identifying better ways of working, simplifying the tasks of data collection and reporting to make it easier for our members to do what they love and abandoning processes that do not deliver value.

This, in turn, will help deliver a better-connected Landcare in NSW so that Landcarers, wherever they are, can know what other groups are planning to do,

- share expertise, learn about events, and minimise reporting requirements.
- Success Factors**
- Implementation of digital strategy to have commenced by December 2023.
 - Enable existing knowledge and materials to be shared and accessible to Landcarers through an easy-to-use website and application.
 - Use technology to create and enhance communities of practice so that Landcare member groups can readily share and learn from each other.
 - Increase skills and knowledge transfer using technology to provide training for Landcarers and coordinators.
 - Use technology to collate and communicate evidence of the impact of Landcare, showing investors the value of their financial contribution.
 - The number of Landcare NSW member groups identifying as Aboriginal will increase by 2024.
 - Landcare group members have increased by 5% (on the 2021/22 baseline).
 - The Landcare NSW Board and State Advisory Council will review the membership program by December 2023 and prepare an improvement plan to report to the Board by January 2024.

2. Create a supply chain for & invest in natural capital

Landcare NSW will seek opportunities to engage in the national conversation more fully around natural capital and play a role in shaping the establishment of natural capital markets.

We will work to implement projects and programs that support Landcarers to contribute to achieving biodiversity, carbon abatement and natural capital outcomes across the State.

A key first step will be defining the space in which Landcare NSW can play the most effective role, focusing on enhancing biodiversity and sustainable farming outcomes for our members and NSW.

We have commenced the creation of a seed library and tree 'store' (nursery) to generate a reliable supply of seeds and plants for Landcare groups and our partners.

Through this work, we will build trust in Landcare NSW as an organisation governments and businesses can rely on to identify and cultivate an extensive state-wide network to support natural capital outcomes.

We will build a clear understanding of the Landcare community's role in the natural capital market, contributing to the achievement of NSW's objective of leading the way in sustainable farming, productive land management and biodiversity conservation.

We will explore opportunities for Landcare NSW member groups in various natural capital markets and identify and report on barriers to appropriate seed and plant supply by working with partners and addressing supply chain gaps by December 2023.



3. Culture

Culture is at the heart of every organisation. We are focusing on developing a culture within Landcare NSW that leads people to say, “I want to be part of that”.

This will come through creating open discourse and building trust through a stronger focus on collaboration and supporting a diversity of cultures. We will foster a culture that will attract diverse people and motivate all generations to get involved.

We will begin by ensuring we understand our culture, defining our current and future state through collaborative activities such as musters, visiting our member groups, and engaging with our staff team, Board and State Advisory Council, and executive coaching. Embedding leadership development into the core of what we do will be a key element of the process.

We will create and embody a culture at Landcare NSW where its leaders, volunteers, staff, and partners feel valued and included and where they know their work will be recognised and rewarded.

Investors will want to partner with us and aspire to our vision, the passion of our community, and the results we achieve.

Success Factors

- Publish a communication strategy by December 2023.
- Develop an innovation and skills hub and consulting business model by December 2023.
- Measure our brand impact by June 2024.
- Grow and maintain the membership of the Parliamentary Friends of Landcare.
- The readership of Landcare NSW e-newsletter increases year-on-year by 20%.
- Survey feedback shows that >85% of key government stakeholders indicate that Landcare NSW is doing an excellent job promoting the value of Landcare with the State Government.
- Landcare NSW successfully engages with the media to promote the interests of Landcare.

- The number of Landcare NSW print articles and radio interviews increases by 25% year-on-year.
- Landcare NSW CEO or delegate visits every Landcare region at least once every 18 months.
- Landcare NSW CEO or delegate has video/teleconferences with regional Landcare group leaders and key staff every two months.
- All Landcare groups acknowledge the presence and participation of Aboriginal people.
- Increased Aboriginal engagement at a regional scale by end of 2025.
- Define what would constitute an ongoing commitment with our organisation and partners to a diverse Aboriginal community through self-determination by December 2024.
- Landcare at all levels across NSW has an agreed set of cultural values by December 2023.
- A State NSW Landcare Muster is held every two years as the primary in-person engagement and idea sharing forum for Landcare Member groups and their volunteers.
- Annual performance reviews, professional development, and training programs will be developed for the Directors in consultation with the Chair by the end of 2024.
- The Landcare NSW Board and State Advisory Council have the skills, culture, and diversity for Landcare NSW to grow in impact and effectiveness, measurable by the end of 2024.



4. Grow our investor base

Landcarers across the State can only do their critical work if they, and the peak body supporting them, are adequately funded.

A strong, engaged, diverse investor base is the foundation for programs. We will continue to grow and diversify our investor and resource base, and we will build on our strong partnerships with the government and explore private and philanthropic sources.

We will adopt an innovative approach that will allow us to optimise opportunities outside our traditional funding pathways. This will include leveraging our Deductible Gift Recipient (DGR) status to build a broader philanthropic income stream and engaging with various sectors interested in natural capital.

We will build increased trust with partners, particularly with the NSW Government, to increase our reach. More importantly, our goal for this work is that it delivers newly funded, long-term programs that recognise the broader role our grassroots members contribute to the NSW community, primary production, natural capital, resilience to natural disasters, and

improvement of human health. Our new endeavours will build a reasonable level of equity over time.

Success Factors

- Publish a prospectus to educate our stakeholders on how they can support specific Landcare activities requiring funding.
- Publish a Member Journey Map by December 2023.
- Landcare NSW revenue, as well as retained funds, grow year-on-year by 30%.
- Landcare NSW’s diversification of funding has increased by 20% year-on-year.
- Landcare NSW’s partnerships with existing government agencies and for-purpose organisations are strong and provide measurable value to Landcare NSW and its membership.
- Landcare NSW receipts from direct donations will increase by 20% year-on-year.
- Landcare NSW’s growth of revenue from philanthropy and grants increases year-on-year by 20%.

5. Strengthen foundations and programs that support the NSW Landcare community

We are working on several new approaches and new initiatives, but we will continue to give due attention to the proven programs, partners and processes that have helped create the success story that Landcare NSW already is.

We will continue to nurture our main funded NSW Landcare Enabling Program, underwritten by the NSW Government and co-delivered with NSW Local Land Services.

We will harness co-design principles to enable ownership for all our members and partners in future programs. This will ensure efficient and effective delivery of program outcomes and help us to collaborate with government agencies and our grassroots communities effectively.

By further enhancing this Program, we will deliver stability for our members and demonstrate our credentials as a partner trusted to deliver high-quality natural resource management outcomes for NSW.

As a flow-on effect, we anticipate increased memberships and greater engagement with the Landcare movement, supporting our vision of one million Landcarers by 2040.

Success Factors

- All Landcare NSW programs and projects are delivered on time, on budget, and with a client satisfaction rating of >85%.
- Landcare NSW to have secured a 4-year, \$20 million Landcare Natural Disaster Recovery and Preparedness Program by mid-2024, building on the current \$1.9 million commitment (secured in 2022/23).
- Increase the number of project partners by 20% year-on-year.

Financial Update

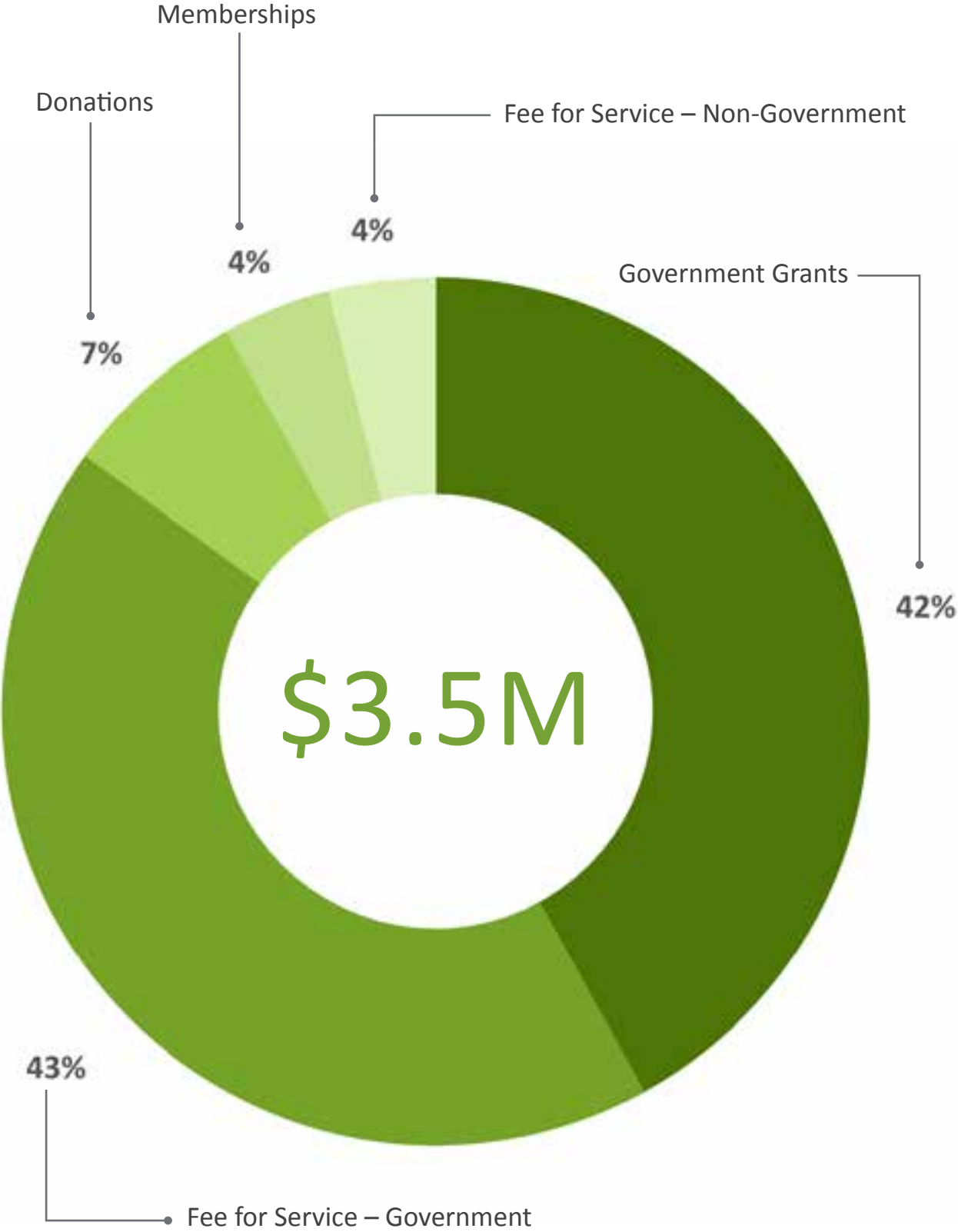


Chart 1: Where does our money come from?

Chart 2: How is our money distributed?

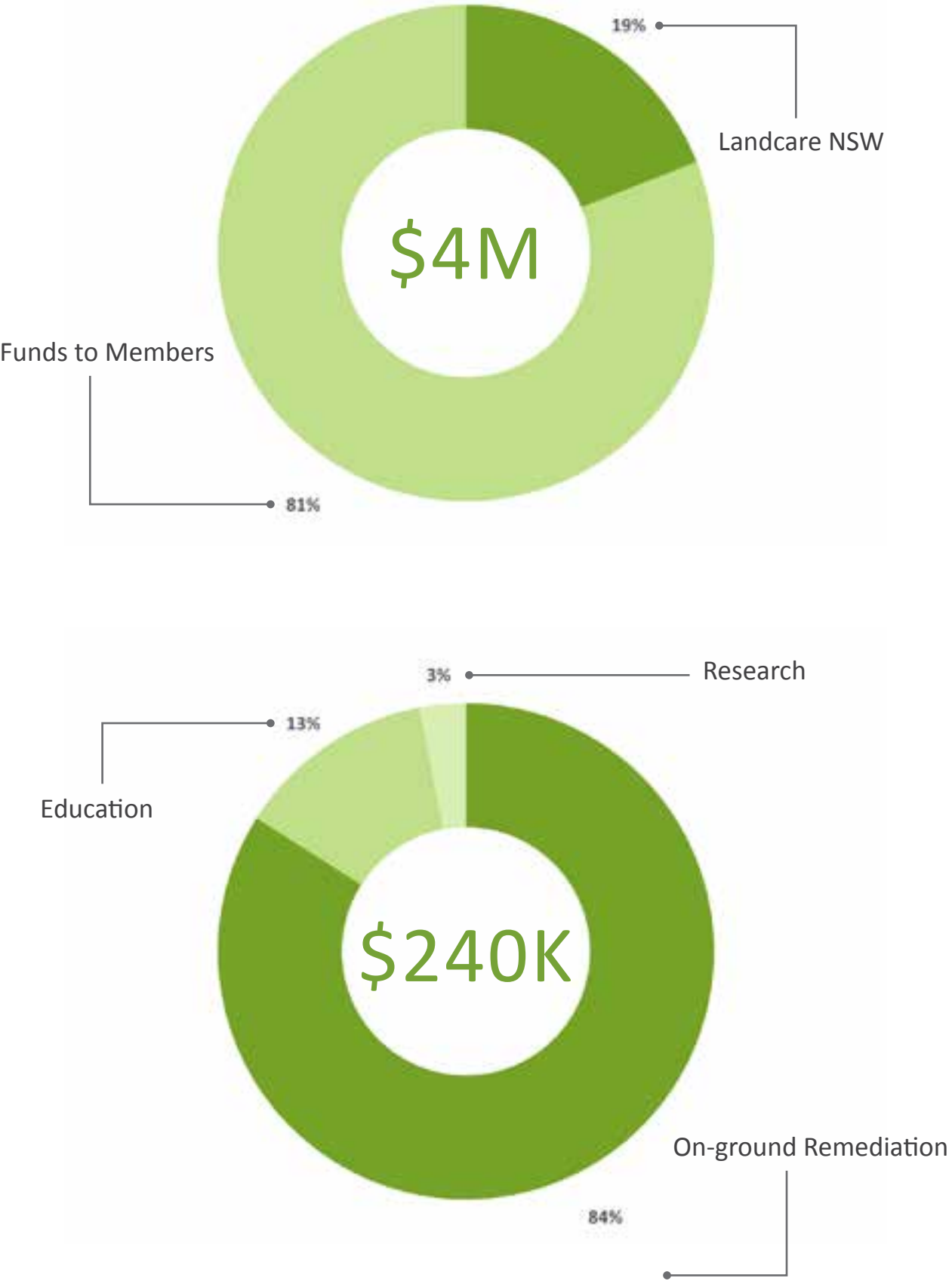
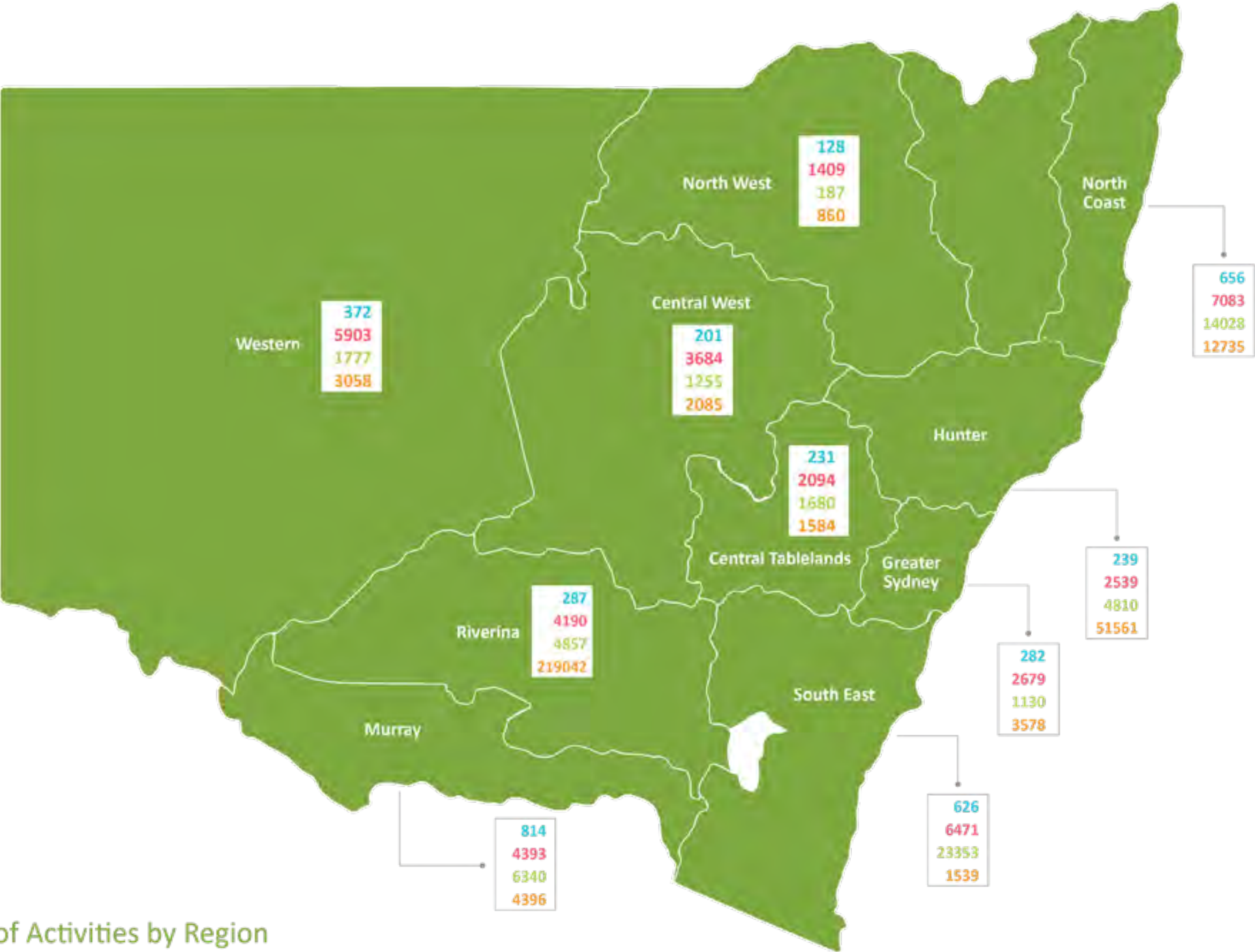


Chart 3: How are your donations used?



Summary of Activities by Region

No. Activities Conducted

No. of Participants

No. of Native Plants Planted

No. of Field Day Visitors



This initiative is made possible by the NSW Landcare Program. A collaboration of Local Land Services and Landcare NSW supported by the NSW Government.

Landcarers at the Root of our Governance Systems

Landcare NSW’s governance is supported by the Board of Directors, Nominations Committee, FARM Sub-Committee, Public Fund Management Committee and State Advisory Council; all working together to promote good governance and member confidence in Landcare NSW.

Your Board of Directors

From July 2022, Landcare NSW became a company limited by guarantee, which required a transition from an ‘Executive Committee’ to the current ‘Board of Directors’. The ten-member strong Board of Directors comprises six ‘Ordinary’ Directors- who bring the unique regional perspectives of the Landcarers from their electoral zone, and four ‘Independent’ Directors who bring unique skills and experience to the Board.

One of the ‘Independent’ Director roles has been dedicated to a Director identifying as Aboriginal and/or Torres Strait Islander. In October 2022, Landcare NSW welcomed its first Aboriginal Board Director – Rene Woods, a strong advocate for First Nations peoples, bringing a cultural lens to Landcare NSW’s work with water and land practices.

The Board’s role in overseeing the organisation’s Strategic Plan and the delivery of the Landcare NSW mission is strengthened with the good governance practices that the following committees provide.

The Nominations Committee, led by the Vice Chair of the Board, meets monthly to manage the recruitment and vetting of Director candidates as well as to identify skills that the Board requires to support the delivery of the Strategic Plan.

The Finance Audit Risk Management Sub-Committee (FARM) also meets monthly. Driven by the Treasurer of the Board, this committee ensures Landcare NSW is compliant and is operating in accordance with the best financial practices.

The Public Fund Management Committee is comprised of Board members who administer the Landcare NSW Fund (Public Fund).

2023 Board of Directors

- Stephanie Cameron (Chair), Ordinary Director for Northwest & Northern Tablelands Regions
- Gareth Johnston (Vice Chair), Ordinary Director for Murray & Riverina Regions
- Hunter White (Treasurer), Ordinary Director for Central Tablelands & Central West Regions
- Lyn Thomson (Secretary), Ordinary Director for North Coast & Hunter Regions
- Steve Bunnell, Ordinary Director for South East & Greater Sydney Regions
- Howard Jones, Ordinary Director for Western Region
- Kathy Kelly, Independent Director
- Bruce Rolph, Independent Director
- Elizabeth Riley, Independent Director
- Rene Woods, Independent Director



What is in store for 2024?

The Board will see the transition of two pivotal Office Bearing Directors, who are stepping down from the Board after significant contributions and years of service.

Stephanie Cameron, who joined the Executive Committee in 2014 and has served as the Chair of the Board for the past five years, will be stepping down from the Landcare NSW Board after the 2023 Annual General Meeting.

Hunter White will also be stepping down from the Board after five years of dedication and support as Treasurer.

The Office Bearer roles of Chair and Treasurer have been filled by fellow Board members, as supported by the Nominations Committee.

Your Regional Representatives

The State Advisory Council was officially formed in 2022 with with the four office bearing Directors and eleven Regional Representatives, with eleven regional support staff in observation.

The purpose of the State Advisory Council is to be the official forum of dialogue between the regions and the Landcare NSW Board.

The Regional Representatives communicate the needs of their Landcare Regions and the districts and groups they represent to the Board.

This group meets four times per year, including two in-person gatherings. These events create greater connections among the regions, between regional representatives and the Board, and continue building strong relationships with the Landcare NSW team.

Topics discussed by the State Advisory Council:

- | | |
|------------------|-----------------------|
| • Membership | • Partnerships |
| • Insurance | • Capacity Building |
| • Marketing | • State-based Support |
| • Communications | • Biosecurity |

2023 State Advisory Council Members:

- Stephanie Cameron, Chair
- Gareth Johnston, Vice Chair
- Hunter White, Treasurer
- Lyn Thomson, Secretary
- Adrian Wells, Murray Regional Landcare Inc
- Bev Debrincat, Greater Sydney Landcare Network
- Gemma Purcell, Murrumbidgee Landcare Inc
- Greg Thompson, South East Landcare Inc
- Larry Langman, North Coast Regional Landcare Network
- Lawrence Balcomb, Central Tablelands Regional Landcare Network Inc
- Margot Jolly, Central West Region Landcare Inc
- Paul Heley, Western Landcare NSW Inc
- Robyn Lamond, Hunter, and Mid Coast Landcare Hub Inc
- Steve Harvey, New England Landcare Network Inc
- Wayne Chaffey, North West Regional Landcarers Inc

Landcare NSW Projects

2023 NSW LANDCARE PROGRAM HIGHLIGHTS

In 2023, the NSW Landcare Program continued to deliver high-impact, high-quality services to the NSW Landcare community.



18% of activities involving Aboriginal engagement, with 72% of coordinators forming new partnerships with Aboriginal communities in the last 12 months and a further 13% strengthening existing partnerships.



NSW Landcare Program

The NSW Landcare Program 2019 – 2023 is a four-year program funded by the State Government and co-delivered through a partnership between Landcare NSW and Local Land Services. The Program supports 52 Landcare groups and networks to employ 84 part-time local and regional Landcare coordinators. These coordinators work directly with over 850 Landcare groups to improve their governance, communication, partnerships, and ability to coordinate on-ground activities.

Hosted by Landcare NSW member organisations, the Landcare Coordinators play an integral role in building our capacity to deliver the crucial work we undertake in supporting our environment and communities. Their activities include revegetation works, mental health workshops, education, regenerative agriculture, threatened species management and more.

The Program is comprised of the following components:

- Community of practice support, including funding for Landcare groups and coordinators to share knowledge and build capacity.
- Professional development bursary and support for coordinators.
- Working Together Program to improve engagement between Aboriginal and non-Aboriginal communities to share traditional land management practices and cultural heritage.
- State conferences and gatherings to share knowledge, maintain connections and celebrate achievements.
- Promotion, online presence, case studies sharing Landcare knowledge and learnings.

The 2023 State Gathering was held from May 16-18, 2023 in Coffs Harbour on the North Coast of NSW. The successful gathering attracted over 180 attendees from across the State, including regional and local Landcare coordinators, host organisation representatives, Landcare Program staff, Regional Agricultural Landcare Facilitators, Local Land Services and Landcare NSW staff and supporting partners. The Hon. Tara Moriarty, Minister for Agriculture, Regional NSW, and Western NSW also attended and confirmed the Government’s commitment to support the Landcare community.

To date, the work of the Landcare Coordinators has led to \$27 million of on-ground activity benefits, \$9.5 million in increased volunteering and \$40 million in community participation, health, wellbeing and resilience benefits. The Program generated \$26.7 million in additional funding benefits by leveraging partnerships and collaborations.

NSW Landcare Enabling Program 2023 -2027

In December 2022, Landcare NSW submitted a business case to the NSW Government to continue and expand the NSW Landcare Program beyond 30 June 2023 until 30 June 2027.

The NSW Government committed \$58.8 million for a new four-year NSW Landcare program. This Program will be co-designed and co-delivered by Local Land Services and Landcare NSW and overseen by a Joint Management Committee.

The thriving partnership between Local Land Services and Landcare NSW has been in place since 2015, delivering a program that empowers people to act on local problems and deliver outcomes across local and regional issues.

BCT Partnering in Private Land Conservation: Private Land Conservation Really Does Matter

The Biodiversity Conservation Trust (BCT) has engaged with Landcare NSW since the partnership commenced on 25 August 2017.

Landcare NSW and the BCT established a partnership memorandum of understanding (MOU), which enabled the BCT, Landcare NSW, and the broader Landcare community to collaborate meaningfully, engaging and supporting landholders to achieve better biodiversity conservation outcomes.

Landcare NSW and the BCT partnered from 2020 to 2022 to raise awareness and support Private Land Conservation (PLC) efforts across the State in the project Partnering in Private Land Conservation.

There were some impressive outcomes: 778 field days, 149 networking events, 390 newsletters, videos, and brochures, and 2635 people directly engaged.

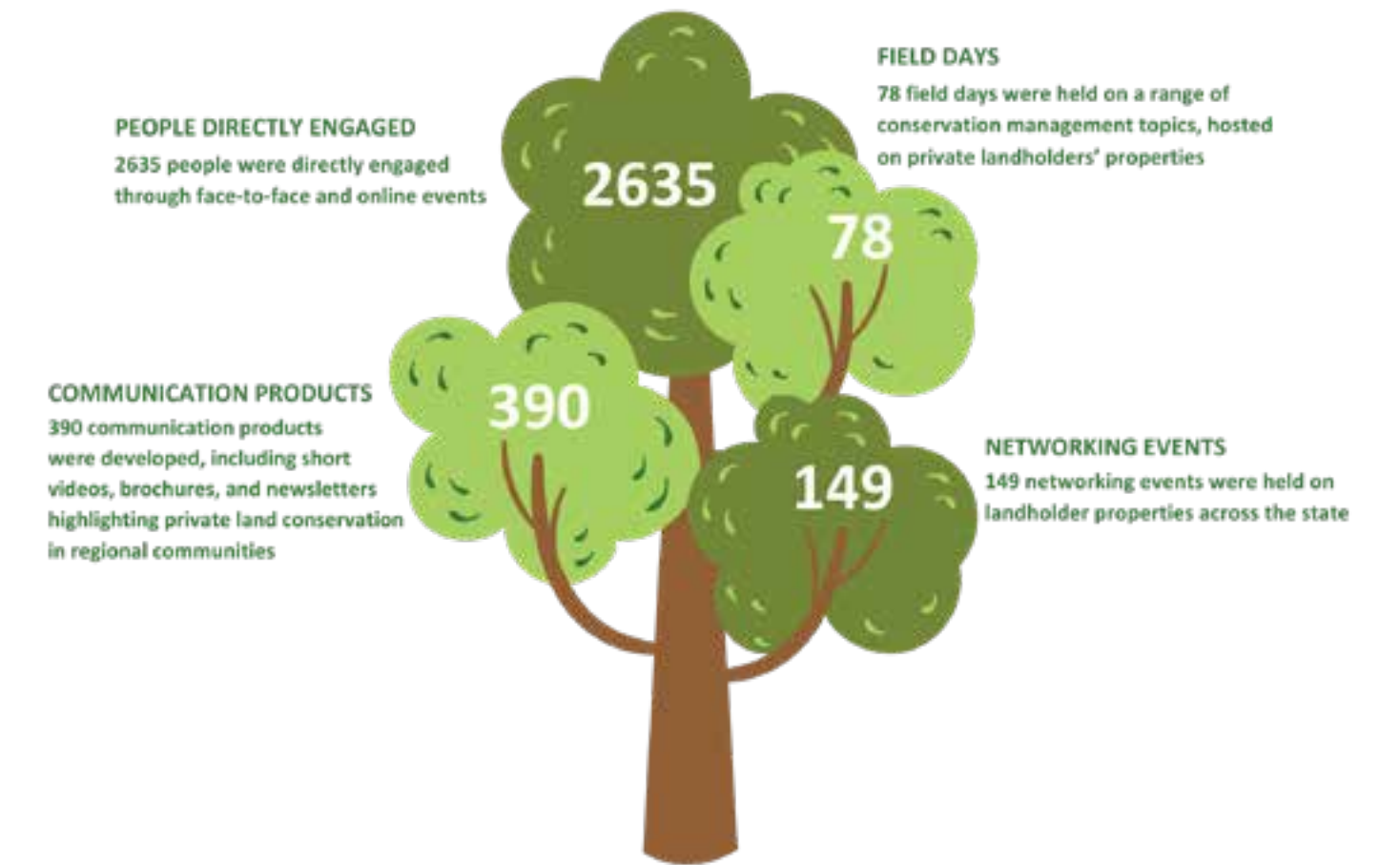
There were also many lessons learned, like the value of having a project coordinator, contingency plans

for pandemic, floods and fires, and the importance of co-designing at a regional level.

The positive and genuine partnership laid a strong foundation on which to continue to grow the private land conservation movement. Due to the success of this partnership and the outcomes achieved, a second-stage project was proposed and endorsed, incorporating the learnings from the first project.

In July 2023, the second phase of this project commenced, Private Land Conservation Matters. Sharing the Landcare know-how, connecting communities of practice and strengthening the ties between BCT landholders and the Landcare community are the foci of this 18-month project.

The second stage of the project aims to work closely with the BCT leading a state-wide landholder education project raising awareness of biodiversity conservation and the BCT within targeted regional communities by delivering field days and networking activities.



Photograph by Peter Katelaris

Creating Canopies

In 2020, Greater Sydney Landcare, in partnership with Landcare NSW, received funding from the NSW Government for Creating Canopies—a two-year project to plant 100,000 trees and shrubs across Greater Sydney to help mitigate urban heat.

On September 3rd, 2022, the 100,000 target was reached at a Liverpool NSW planting event.

Greater Sydney Landcare and Landcare NSW were re-engaged to deliver stage 2 of the project—planting 200,000 trees across Greater Sydney by the end of 2025. This project benefited from a broader scope and increased funding from the NSW Government.

Creating Canopies is part of the Greening Our City program to help reduce urban heat in Greater Sydney. With the community’s help, Creating Canopies has planted in parks and reserves, universities, hospital grounds, golf courses, equestrian clubs, on Land for Wildlife properties, farms, and on private land.

Creating Canopies is focussed on planting in LGAs of Sydney with less than 30% canopy cover. The trees planted will grow to a minimum of 3 metres—though some can grow much higher, like 35 metres tall. Once established, this canopy cover will provide shade and cooling through evapotranspiration and help reduce urban heat.



Eat Dirt Program

The first stage of Eat Dirt concluded in June at Bellinger High School, with a workshop for teachers, the students involved, local stakeholders and those responsible for delivering the project.

An area of bushland adjacent to the school has been rehabilitated thanks to Bellinger Landcare and the students involved. Four shade houses have been purchased to propagate plants; a teachers’ kit has been produced and a short video commissioned to showcase the project.

The aim of the project was to reimagine education and this was achieved by taking students out of the classroom to work outside for one day a week, combining traditional subjects to get students thinking critically and working as a team.

The aim was to connect the students to Country, nature, and each other. We achieved this by working with local Gumbaynggirr elder, Gawa Micklo Jarrett and local bush regenerators.

Art therapist Bronwyn Napiorkowski helped students manage their anxieties through a range of activities including designing vegetable gardens, journaling and creating nature artworks.

The students also learnt propagation, basics of bush regeneration and remote area firefighting. Primal games were introduced to bring cohesion to the cohort and maths skills were enhanced through darts.

The project was funded through a Black Summer Bushfire grant administered by the NSW Reconstruction Authority.



People Led Prevention Project

The Landcare NSW People Led Prevention pilot project, which received joint funding from the Australian and NSW Governments, concluded on September 30, 2023. The primary objective of the pilot was to raise awareness and promote the adoption of techniques for natural disaster preparedness. It also aimed to enhance landowners’ understanding of natural hazards and risks specific to their regions, with a focus on Landcare activities and nature-based interventions.

The project explored several key areas:

Bushfire Risk: This involved examining how the selection of plant species and their placement can influence susceptibility to bushfire risks for Landcare project sites, properties, and homes.

Flood Risk: The project explored how factors like long stem plantings, site selection, and bank stabilisation techniques contribute to flood resilience and reduce erosion risks. It also looked into how upper catchment plantings affect flood flows.

Wild Weather: This component involved understanding how to interpret weather reports and how climate models can aid in future planning.

Heatwaves: The focus here was on how urban plantings can help mitigate the effects of heatwaves, making urban areas more habitable and resilient.

Landslips: The project investigated the role vegetation plays in decreasing landslide risks and how understanding the soil landscape can aid in mitigating natural disasters.

Following a co-design process, the priorities of each region were taken into account in terms of natural hazards and delivery mechanisms, resulting in a tailored workplan for each area.

The project showcased the effectiveness of nature-based solutions through various prevention and preparatory methods. It also emphasised the importance of creating a shared understanding and community focus on land management preparation and natural risks in localised areas.

The three pilot regions were North West, North Coast, and North West Sydney.

Through hands-on work with the Landcare network, a dedicated Resilience Officer was recruited to oversee the project and deliver targeted information. This initiative had an overall positive impact on behavior change for individuals in the participating regions



Across these three regions, 12 events were conducted, reaching over 600 participants through face-to-face engagement. Feedback and data from participants were highly positive, indicating that Landcare NSW effectively enhanced participants’ knowledge and preparedness across various types of hazards.

The project fostered partnerships and relationships at both the State and regional levels, involving Landcare NSW and leading disaster agencies.

The project successfully tested and piloted the role of Landcare in the disaster preparedness space. It overwhelmingly demonstrated that Landcare is a natural fit, being a trusted brand with a robust network of individuals invested in nature-based solutions for risk reduction.





Glen Innes



Kyogle



Bingara



Northern NSW

The 29th Rural Women’s Gathering Goes off with a Bang in Glen Innes!

NSW Rural Women’s Gatherings began in NSW in 1993 to connect, celebrate and empower regional, rural, and remote women in NSW.

In October 2022, the NSW Rural Women’s Network was officially re-launched with support from the NSW Government and in collaboration with GLENRAC and Guyra CWA Evening Branch.

NSW Minister for Women, Regional Health and Mental Health, the Honourable Bronnie Taylor MLC, announced, “Rural women... we’re back!” highlighting rural women as the backbone of effecting change in rural communities: “Rural women are amazing. We are industrious, we don’t take no for an answer, we are practical, we don’t ask for the world, and we bring people into the middle. It really is our superpower. That’s why days like today are so important, not only to top up our own souls but to be able to come together and to connect, to form groups to discuss what we need to advocate for.”

Forums like this provide valuable experience and exposure for young women pursuing their passions in their chosen fields, encouraging, and promoting their capabilities as future female leaders for our rural communities.

NSW Rural Women’s Gatherings create opportunities for women to make new connections, strengthen existing relationships, and explore topics relating to rural women.

Upper Richmond River Festival

The catastrophic flood events of Feb-Mar 2022 caused immense damage to the creeks and rivers across the Northern Rivers. Enquiries seeking support for erosion concerns skyrocketed, and many Landcare groups were devastated to see their past efforts to restore riverbanks washed away.

The Border Ranges Richmond Valley Landcare Network rolled out the Upper Richmond River Festival as a program of 18 river-themed events across April and May 2023, putting the spotlight on river health through a festival program offering something for everyone with an interest in caring for our creeks and rivers.

For the strategic thinkers, the program offered workshops on restoring wetlands, understanding erosion control, investigating water bugs and strategic weed management along the waterways. There were action-packed activities, including a river kayak adventure, riparian tree plantings and a Ridge to River Regen Camp Out, as well as some cultural and creative events, including Baluun Yarning- river stories sessions, a river-themed film night, photography competition and a painting riverscapes workshop.

Centred around the Kyogle zone of the Richmond River, this festival brought together nearly 500 people and generated attention and intention for improving the health of our creeks and rivers. The groundswell will continue to grow, with plans already brewing for another Richmond Riverfest in 2024.

Who is the Embroidered Flower Fancier?

NSLA successfully secured grant funding from North West Local Land Services (NW LLS) to achieve the dual goals of community and visitor education and habitat enhancement along the Manilla River on the outskirts of the township of Barraba.

Threats abound for the small number of remaining Regent Honeyeaters and with the Bundarra-Barraba region being one of only three known breeding areas, the Northern Slopes Landcare (NSLA) was keen to support the fledgling Barraba Landcare group and help educate the community about this rare bird, whilst enhancing the habitat along the Manilla River in Barraba.

23 community members from across the region planted over 80 trees, shrubs, and understorey species at the community planting day with support from Barraba Landcare, Tamworth Regional Council (TRC) staff, NW LLS, Birdlife Australia, and the University of New England (UNE).

Dr. Steve Debus from UNE provided the community with facts, figures, myths, and stories about the regent honeyeater over morning tea. Craig Pullman from NW LLS provided a range of booklets and brochures and a 3D-printed replica of the bird.

A permanent sign was erected in the park with the direct translation of the scientific name of the Regent Honeyeater, ‘Embroidered Flower Fancier’.

Creative Community Days

After a string of natural disasters from drought and fires to floods to COVID-19, already isolated rural towns became more isolated than ever.

To help small rural towns build inclusive, friendly, and more resilient communities, Gwymac Landcare hosted creative workshops meeting the need for social activities to break the isolation.

Gwymac Landcare secured funding from the Foundation for Rural & Regional Renewal (FRRR) to hold 16 workshops in four small rural towns in the Inverell Shire between August 2022 and January 2023. These were held in Bonshaw, Yetman, Ashford, and Delungra and included terrarium building, basket weaving with Indigenous Elder Dolly Jerome (Thawun Gali) and copper fold form artisan jewellery making with silversmith Richard Moon. Over 100 participants from the local area accessed these catered workshops, free of charge.

Positive feedback from the community included:

“Fantastic day connecting with wonderful people.”

“Great to see events happening in our small towns to bring the community together.”

“Very uplifting and positive. A day full of sunshine.”

“What a wonderful day. I rarely go out, and this was fun and educational all at once.”



Mudgee

Green Day – Not Just One Day but Everyday!

Green Day is an eagerly anticipated event that impacts beyond our classrooms, across playgrounds, in homes and within our community that educates, empowers, and creates action, contributing to the legacy of the Green Day concept.

In September 2022, Watershed Landcare celebrated its 14th annual Green Day event, where 600 students from 18 local schools gathered to experience an array of workshops and hear from inspiring guest speakers, plus a special session with Keynote Speaker Costa Georgiadis.

Activities included compost building, native plant identification, gardening, reusing and growing food from scraps, the importance of habitat and biodiversity, and so much more.

Junior Landcare Ambassador, TV Presenter and Gardening Guru Costa shined the spotlight on the theme ‘Grow Your Way’, working towards a more sustainable future, inspiring our kids, schools, educators, and the community over a jam-packed three days and five events.

Over 70 people attended the first-ever Green Day for Grown-Ups, where they learned all about wicking garden beds, community gardens, beekeeping, native plant uses and exciting innovations in nest boxes.

Approximately 80% of the community members who attended were not existing Watershed Landcare members, resulting in increased membership numbers, affiliate memberships, nursery sales and community awareness.



New England & North West

New England & North West Landcare Adventure 2023

The Landcare Adventure is an event/conference celebrating Landcare across the New England and North West regions, providing valuable insights on environmental research, soil health, community engagement, and citizen science.

The conference allowed various experts to give engaging presentations, offer interactive workshops, engage in meaningful dialogue, and explore the latest innovations, strategies, and best practices in Landcare, biodiversity, and conservation.

The Landcare Adventure provided an excellent opportunity for over 130 attendees to learn from and collaborate with like-minded individuals and organisations on ways to better care for and protect our land and its resources.

Results from the attendee survey reflected that over 95% were satisfied with the event, meeting expectations received a 4.9 out of 5 rating, and most expressed interest in attending future Landcare events.



Wagga Wagga

Bioblitz in Yanco

An increase in biodiversity and conservation is critical in maintaining the riparian land on farms in the Yanco Region.

Murrumbidgee Landcare hosted a Bioblitz Day in partnership with Petaurus Education Group and the Biodiversity Conservation Trust at McCaughey Bicentennial Park, Yanco, where 80 students from Yanco Primary School were educated about the critical role of Land Managers and Citizen Scientists.

Most students from Yanco Primary School come from farming families but had limited exposure to biodiversity, habitat and ecosystem identification, monitoring, and management. As a result of the lack of understanding of the native bush and ecosystems, little remnant vegetation is left.

The students:

- Identified the diversity of freshwater macroinvertebrates and their behaviours from samples from the Yanco Lake, using a dichotomous key.
- Identified groundcover types and developed groundcover evaluation techniques.
- Learnt about the importance of birds, their role in healthy ecosystems and ways people change the natural environment.
- Learnt about habitat and the importance of pollinators in maintaining healthy ecosystems. Heard from the Local Landcare Coordinator, who provided local knowledge on the habitat of the wetland ecosystem.
- Heard from two local First Nations educators who provided information and shared Indigenous artefacts.



Hovells Creek

Drought Forewarning

Hovells Creek Landcare was funded by the Australian Government’s Future Drought Fund to make new technologies and training available to members, giving them more tools to see when the weather is trending towards dry times and enabling them to respond with informed management decisions.

The tools below are critical with the prediction of more extreme droughts under the changing climate because with this information, farmers can build a picture of approaching drought and model different responses before undertaking on-ground works.

Two new soil moisture probes were installed as part of a suite of probes across the southeast of NSW. The soil probes provide localised soil moisture data and predictive information about pasture growth and livestock performance.

Provision of workshops and one-on-one training for the CSIRO’s GrassGro software. The GrassGro software allows farmers to build farm plans and model different management scenarios for approaching drought, for example, feeding, agistment, selling, etc.

An aerial map was created for high-resolution three-dimensional data of the Hovells Creek valley. The 3D mapping provides detailed information, including water flow across the landscape, potential places for earthworks to mitigate erosion and wetland rehydration, number and height of trees and shade percentage per paddock, legal boundaries, accurate fence lengths and distance to water per paddock for stock.



NSW Parliamentary Friends of Landcare

The NSW Parliamentary Friends of Landcare (PFL) is a cross-party group of NSW Members of Parliament who have a common interest in demonstrating support for the goals of Landcare.

The PFL allows Members of Parliament to connect with and support local Landcare, ensuring that Landcare is accurately represented, and members’ views are heard and represented at a policy level.

Parliamentarians join with the NSW Landcare network and communities in events and opportunities and collectively aim to highlight the role community Landcare plays in the protecting the environment and creating social cohesion.

The PFL gives Landcare NSW the platform to brief MPs from all political parties on news and issues related to Landcare NSW, furthering relationships with politicians at the State and local levels.

In August 2023, over 90 Members of Parliament, Government Ministers, agency representatives and Landcarers from across the State came together to celebrate Landcare’s achievements and discuss future challenges at the ‘Trees in the House’ event hosted by the PFL at NSW Parliament House in Sydney.

Trees in the House is Landcare NSW’s yearly flagship event, co-hosted with the bipartisan NSW Parliamentary Friends of Landcare group.

The event recognises the vital work Landcarers do every day in their local community, showcases the success and resilience of the Landcare movement,

and allows MPs to connect with and offer support to Landcare.

The name Trees in the House stems from giving away a small tree to Parliamentarians to take home and plant in their electorate.

For this one evening each year, Members of Parliament can be seen walking the corridors of Parliament House with seedlings in hand, ready to plant.

The key messages from the event included the importance of governments partnering with grassroots movements on complex issues such as the environment, farming, and climate change, including the need for co-design, co-delivery, and co-management of government programs.

Landcare’s immense social capital and local knowledge to deliver excellent program outcomes were also highlighted, as well as Landcare’s proven track record with implementing statewide government programs.

The new Co-Chairs of the PFL, the Hon. Steve Whan and the Hon. Michael Kemp, are passionate advocates for Landcare and are willing to work with us to create opportunities for valuable, regular communications with PFL members and provide improved engagement between local Landcare groups and Local MPs.

List of Members

Adam Marshall MP

Anna Watson MP

- Parliamentary Secretary for Roads
- Parliamentary Secretary for Regional Transport and Roads

Anthony Roberts MP

- Legislative Assembly Trustee
- Parliamentary Contributory Superannuation Fund

Clayton Barr MP

Courtney Houssos MLC

- Minister for Finance
- Minister for Domestic Manufacturing and Government Procurement
- Minister for Natural Resources

Dave Layzell MP

David Harris MP

- Minister for Aboriginal Affairs and Treaty
- Minister for Gaming and Racing
- Minister for Veterans
- Minister for Medical Research
- Minister for the Central Coast

David Mehan MP

- Parliamentary Secretary to the Treasurer

Dominic Perrottet MP

Dugald Saunders MP

- Shadow Minister for Regional NSW
- Shadow Minister for Agriculture and Natural Resources

Eleni Petinos MP

- Shadow Minister for Finance
- Shadow Minister for Sport

Gareth Ward MP

Geoff Provest MP

Greg Piper MP

Gurmesh Singh MP

- Shadow Minister for Tourism
- Shadow Minister for Emergency Services
- Shadow Minister for the North Coast

Helen Dalton MP

James Griffin MP

- Shadow Minister for Energy and Climate Change
- Shadow Minister for Customer Service and Digital Government

Janelle Saffin MP

- Parliamentary Secretary for Disaster Recovery

Jenny Aitchison MP

- Minister for Regional Transport and Roads

Jenny Leong MP

Jo Haylen MP

- Minister for Transport

Jodie Harrison MP

- Minister for Women
- Minister for Seniors
- Minister for the Prevention of Domestic Violence and Sexual Assault

Joe McGirr MP

Judith Hannan MP

Justin Clancy MP

- Shadow Minister for Skills, TAFE and Tertiary Education

Kate Washington MP

- Minister for Families and Communities
- Minister for Disability Inclusion

Kellie Sloane MP

- Shadow Minister for Environment

Kevin Anderson MP

- Shadow Minister for Gaming and Racing
- Shadow Minister for the Arts and Heritage

Leslie Williams MP

- Shadow Minister for Women
- Shadow Minister for Prevention of Domestic Violence and Sexual Assault
- Shadow Minister for Aboriginal Affairs

Liesl Tesch MP

- Parliamentary Secretary for Families and Communities
- Parliamentary Secretary for Disability Inclusion

Liza Butler MP

Marjorie O’Neill MP

- Parliamentary Secretary for Transport

Mark Coure MP

- Shadow Minister for Multiculturalism
- Shadow Minister for Jobs, Industry, Innovation, Science and Technology
- Shadow Minister for South-Western Sydney

Matt Cross MP

Matt Kean MP

- Shadow Minister for Health

Michael Holland MP

- Parliamentary Secretary for Health
- Parliamentary Secretary for Regional Health

Michael Kemp MP

Michael Regan MP

Paul Scully MP

- Minister for Planning and Public Spaces

Penny Sharpe MLC

- Minister for Climate Change
- Minister for Energy
- Minister for the Environment
- Minister for Heritage
- Leader of the Government in the Legislative Council

Philip Donato MP

Richie Williamson MP

Robyn Preston MP

- Deputy Leader of the Opposition in the Legislative Assembly
- Shadow Minister for Mental Health and Medical Research
- Shadow Minister for Veterans

Rory Amon MP

Roy Butler MP

Sonia Hornery MP

Steph Cooke MP

- Shadow Minister for Water
- Shadow Minister for Crown Lands

Stephen Kamper MP

- Minister for Small Business
- Minister for Lands and Property
- Minister for Multiculturalism
- Minister for Sport

Steve Whan MP

- Minister for Skills, TAFE and Tertiary Education

Tamara Smith MP

Tanya Thompson MP

Tara Moriarty MLC

- Minister for Agriculture
- Minister for Regional New South Wales
- Minister for Western New South Wales

Tim Crakanthorp

Tim James MP

- Shadow Minister for Fair Trading, Work Health and Safety and Building

Trish Doyle MP

- Parliamentary Secretary for Climate Change
- Parliamentary Secretary for Energy
- Parliamentary Secretary for the Environment
- Parliamentary Secretary for Heritage

Wendy Tuckerman MP

- Shadow Minister for Local Government
- Shadow Minister for Small Business

Yasmin Catley MP

- Minister for Police and Counter-terrorism
- Minister for the Hunter

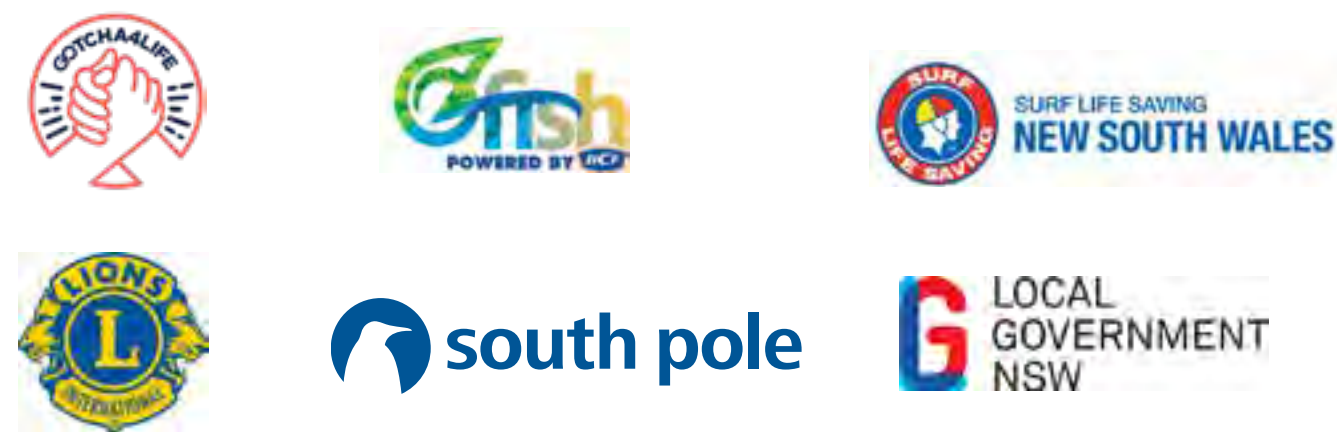
Partnership Support

Landcare NSW works to support the community Landcare movement in NSW by partnering with State and Federal Governments, corporates, not-for-profit organisations, farming peak bodies and other Landcare State, Territory and National peak bodies. We will build the capacity of Landcare NSW and its member groups into a compelling, influential, financially sustainable, and agile Landcare movement in NSW that continually delivers positive impact and value to funders, partners and ultimately our land, environment, and communities. By developing new partnerships to support the work our community undertakes, we are helping to strengthen the foundations that support the NSW Landcare community and empower them to undertake the work that they do best – caring for our land and our communities.

NSW Government partnerships

	Local Land Services	NSW Reconstruction Authority
	NSW Department of Primary Industries	Sustainability Advantage
	Biodiversity Conservation Trust	Regional NSW
	Environmental Trust	TAFE NSW
	NSW Department of Planning & Environment	NSW Environment Protection Authority

Other partnerships



Member Benefits

Voting Rights

Landcare NSW member groups have a direct voice in the future direction and strategy of Landcare NSW and the broader movement with full voting rights at its annual AGM to increase the representative and inclusive stance.

Membership Portal

Member groups can access a membership portal and resource library with policy guides and templates designed to help groups grow in capacity, governance, and effective administration.

Communication

- Subscription communications and access to regular Landcare NSW updates via the Connection newsletter, essential issue bulletins, and funding opportunities.
- Events for members to share local, regional, and statewide strategies, information and direction by Landcare NSW and grassroots Landcarers through Regional Leaders Teleconferences, the Landcare NSW Advocacy and Communications tour, and regional Council meetings.
- Policy templates and toolkits specifically tailored to the Landcare community.

Networking and Referrals

Landcare NSW has an extensive network and referral framework to link groups with new members, collaboration opportunities, media, and funding exposure.

Landcare NSW provides opportunities to generate funding and increase the number of volunteers from paid corporate volunteering and partnership opportunities.

Access to Landcare Funded Programs

Members’ only programs include the NSW Landcare Program and the Partnering in Private Land Conservation Project.

Includes several funding opportunities such as: The \$22.4 million NSW Landcare Program (2019-2023), the BCT Partnering in Private Land Conservation Project, the People Led Prevention project, and access to LNSW’s Deductible Gift Recipient (DGR) status and other funding opportunities.

Insurance

Landcare NSW offers a discounted insurance program for incorporated member groups with membership including Volunteer Workers, General and Public Liability, and Association Liability cover.

Incorporated Large			
All Sustainable Futures Inc	Manning Landcare Incorporated	Wilsons Creek Huonbrook Landcare Incorporated	Condobolin and District Landcare Management Committee Incorporated
Bellinger Landcare Inc.	Mid Coast 2 Tops Landcare Connection	Yarrabin Cultural Connections Pty Ltd	Congewai Valley Landcare Inc
Boorowa Community Landcare Group Inc	Mid Coast Dairy Advancement Group	Yass Area Network of Landcare Groups Incorporated	Cooks Myalls Landcare Group
Border Ranges-Richmond Valley Landcare Network Incorporated	Mid Lachlan Landcare Incorporated	Incorporated Small	Coolamon Landcare Group Incorporated
Brunswick Valley Landcare Inc.	Molonglo Conservation Group	Abermain District Landcare Group Inc	Cooma Landcare Incorporated
Cattai Hills Environment Network (CHEN) Incorporated	Mulgoa Valley Landcare Group Incorporated	Arding Landcare Group Incorporated	Coonamble Neighbourhood Centre Inc
Central Tablelands Landcare Inc.	Murrumbidgee Landcare Association Incorporated	Bangalley Head Landcare Group Incorporated	Deniliquin Kolety Lagoons Landcare Group Inc
Central West Lachlan Landcare Incorporated	Nambucca Valley Landcare Incorporated	Bangalow Koalas	Dignams Creek Community Group Inc
Clarence Landcare Incorporated	New England Landcare Network Incorporated	Bangalow Land and Rivercare Group Incorporated	Dorrigo Community Nursery Inc
Clean 4 Shore NSW Inc	North Coast Regional Landcare Network Incorporated	Barham Landcare Group Incorporated	Dubbo Rivercare Group Inc
Coffs Harbour Regional Landcare Incorporated	North West Plains Sustainability Group Incorporated	Barrabaroo Landcare Inc.	Earthcare Park Landcare Group Incorporated
Community Environment Network Incorporated	Northern Slopes Landcare Association Incorporated	Barragal Landcare Group Incorporated	Eastern Riverina Landcare Group Incorporated
Corowa District Landcare Incorporated	Petaurus Education Group Inc	Bass Sydney Fishing Club Inc	Edward Wakool Angling Association
Cumberland Land Conservancy Incorporated	Ricegrowers’ Association of Australia	Bega River and Wetlands Landcare Group Inc	Euston Regional Landcare Incorporated
Dunedoo Area Community Group Incorporated	Richmond Landcare Inc	Ben Lomond Landcare Group Incorporated	Farm on the Green Inc
Eurobodalla Landcare Network Incorporated	Riverina Highlands Landcare Network Incorporated	Berry Landcare Incorporated	Fingal Head Coastcare Incorporated
Far South Coast Landcare Association Incorporated	Shoalhaven Landcare Association Incorporated	Bingman Catchment Landcare Group Inc	Foxground Landcare group Inc
Gilgunnia Landcare Incorporated	Small Farms Network	Bogan Baiters	Friends of Cudgen Nature Reserve
GLENRAC INC	South East Landcare Incorporated	Bowning-Bookham Districts Landcare Incorporated	Friends of Glebe Wetlands Incorporated
Goonengerry Landcare Group Incorporated	Southern New England Landcare Ltd	Braidwood Urban Landcare Group Incorporated	Friends of the Colo Incorporated
Granite Borders Landcare Committee Inc	Tamworth Regional Landcare Association Inc.	Bredbo Community Landcare Group Incorporated	Friends of the Mongarlowe River Incorporated
Greater Sydney Landcare Network Incorporated	Taralga Landcare Group Incorporated	Broke/Bulga Landcare Group Incorporated	Friends of the Royal National Park Incorporated
Gunning District Landcare Incorporated	The Woolshed Thurgoona Landcare Group Incorporated	Buckwaroon Landcare Group Incorporated	Friends of the Schoolmasters House Inc
Gwymac Incorporated	Tilpa Community Committee Incorporated	Bungowannah/Splitters Creek Landcare Group	Fullerton Hadley Landcare Group Incorporated
Hastings Landcare Incorporated	Trees in Newcastle (T.I.N) Inc.	Callan Park Bushcare Inc	Geary’s Gap/Wamboin Landcare Group Incorporated
Holbrook Landcare Network	Tweed Landcare Incorporated	Camden Wombats Landcare	Georgica Sustainable Farming Landcare Group Inc
Hovells Creek Landcare Group Incorporated	Upper Clarence Combined Landcare Incorporated	Capertee Valley Landcare Incorporated	Glovers Garden Incorporated
Hunter Region Landcare Network Incorporated	Upper Lachlan Landcare Inc	Cargelligo Wetlands and Lakes Council Incorporated	Gol Gol Community Reference Group Incorporated
Karuah & Great Lakes Landcare Incorporated	Upper Shoalhaven Landcare Council Incorporated	Carwoola Community Association Incorporated	Goonellabah Tucki Creek Landcare Incorporated
Lachlandcare Incorporated	Upper Snowy Landcare Network Incorporated	Clarence Native Bees Incorporated	Gresford District Landcare Group Incorporated
Landcare Illawarra	Watershed Landcare Group Incorporated	Clarence Valley Conservation In Action (CVCIA Landcare) Incorporated	Grogan Landcare Group Incorporated
Lithgow Oberon Landcare Association Incorporated	Weddin Landcare Steering Committee Incorporated	Coal Point Progress Association Landcare Group	Gunnedah Urban Landcare Group Incorporated
Little River Landcare Group Incorporated	West Hume Landcare Inc.	Colly Gamilaraay Indigenous Corporation	Gunnible Landcare Incorporated
Macleay Landcare Network Incorporated	Western Landcare NSW Incorporated	Colo Heights Progress Association Inc	Harden Murrumburrah Landcare Group Inc
	Western Murray Land Improvement Group Inc.		Hawkesbury Environment Network Incorporated

Hay Trees on Plains Landcare Group Inc

Helensburgh & Districts Landcare Group Inc

Homebush Landcare Group Inc.

Hunter Sustainability Landcare TEAM

Hunter Valley Wine Country Landcare

International Environmental Weed Foundation Habitat Network

Junee Regenerative Landcare Inc

Kangaroo Valley Environment Group Incorporated

Kangarooby Catchment Landcare Group Inc

Karangí Landcare Group Incorporated

Kent Guardians Inc

Killabakh and Lower Cedar Party Landcare Incorporated

Koonenberry NRM Incorporated

Koori Country Cultural Fire Aboriginal Corporation

Kyeamba Valley Landcare Group

Kyogle Landcare Group Incorporated

Lake Macquarie Landcare Network Incorporated

Landcare Broken Hill Incorporated

Ledknapper Wild Dog Action Group Inc

Lets Keep it Cool Inc

Louth Chamber of Commerce

Lower Anabranh Farming Innovation Group

Lower Anabranh Sporting and Landcare Group Incorporated

Luskintyre Landcare Group Inc.

MacDonald Valley Landcare Group

Mackellar Range Landcare

Maclean Landcare Group Incorporated

Macquarie Valley Landcare Group Inc

Maitland Landcare Inc

Manning Coastcare Group Incorporated

Martindale Creek Catchment Landcare Incorporated

McCullys Gap Rehabilitation & Sustainability Community Group Inc.

Michelago & District Landcare Group Incorporated

Mid Macquarie Landcare Incorporated

Milton Rural Landcare Inc

Mt Hope Pest Control Group Incorporated

Murrumbateman Landcare Group Incorporated

Muttama Creek Landcare Group

Nana Glen Landcare Group Inc

Nangarin Landcare Group

Napoleon Reef Land Care Incorporated

NBK Pest Management Group Inc

Nimbin Community Centre Incorporated

Northside Progress Association Inc

Numeralla & District Landcare Group Incorporated

Nymboida Landcare Incorporated

OPEL Outback Pest Elimination League

Orara Valley RiverCare Groups Management Committee Incorporated

Oxygen Farm Assoc. Inc.

Pappinbarra Valley Landcare Group

Peelwood, Limerick & Tuena Landcare

Peninsula Environment Group

Pine Creek Area Rangecare Group

Pittwater Natural Heritage Association Incorporated

Pymont Ultimo Landcare Incorporated

Queanbeyan Landcare Incorporated

Rappville and Surrounds Landcare Group

Razorback Environment Protection Society Incorporated

ReForest Now Ltd

Regen Action Inc

River Dreaming Aboriginal Corporation

Rollands Plains Landcare Group Incorporated

Roseberry Creek Landcare Incorporated

Royalla Landcare Incorporated

Sandon Environmental Alliance Incorporated

Scotts Head Community Landcare Group

Shell Cove Community Garden

Shoalhaven Riverwatch Incorporated

Singleton Shire Landcare Network Incorporated

Smiths Road Community Association Incorporated (Smiths Road Landcare Group)

Snowy River Interstate Landcare Committee Inc

SoilCare Inc

South Coffs Community Garden Inc

South Lismore Duck Pond Landcare Incorporated

Southern Highlands Landcare Network

St Anthonys Kierans Creek Landcare Group

Summer Hill Creekcure Inc

Sustainable Living Armidale Incorporated

Talyawalka Pest Management Group Inc

Tamworth Urban Landcare Group Incorporated

Tarago Landcare Group Incorporated

Tarcutta Valley Landcare Group Incorporated

Temora Landcare and Sustainability Network

The Happy Hens Social Enterprise Incorporated

The Still Creek Catchment Landcare Group Incorporated

The Wollombi Valley Landcare Group Incorporated

Three Valleys Landcare Group Incorporated

Towamba Valley Landcare Group Incorporated

Trees on Farms Mount Vincent Landcare Inc

Tregeagle Land Care Group Inc.

Tullimbar Village Community Garden Inc.

Upper Deua Catchment Landcare Group Incorporated

Upper Kangaroo Valley Landcare Group Incorporated

Upper Molong Creek Landcare Group Incorporated

Upper Mooki Landcare Inc

Upper Murrumbidgee Landcare Committee Incorporated

Upper Spring Creek Landcare

Urabba Parks Pty Ltd

Wagga Wagga Urban Landcare Group Incorporated

Wanaaring Pest Management Group Inc

Websters Creek Landcare Group

Wentworth Area Landcare Incorporated

Wherrol Flat & Caparra Landcare Incorporated

Whian Whian Landcare Incorporated

Wild Seed Landcare Network

Willandra Landholders Alliance

Wilsons River Landcare Group Inc

Wiradjuri Cultural and Environmental Rangers

Yanco Creek and Tributaries Advisory Councils

Yass Landcare Group Inc

Yowrie Valley Landcare Incorporated

Yuraygir Landcare Group Inc

Z-NET Uralla Community Centre

Unincorporated

Bexhill Coopers Creek Landcare

Central Tablelands Intrepid Landcare

Friends of Moore Creek Caves Reserve

Garigal Landcare Group

Gomeroi Yinarr Landcare Group

Macdonald River Restoration Group

Macdonald Valley River Keepers Network

Roberts Creek Landcare

Upper Peel Landcare Group

Wallabadah Creek Catchment Committee

Associate

Cooks River Alliance

Cumberland City Council

Fields Environmental Solutions Pty Ltd

Lake Cowal Foundation

Narromine Shire Council

OceanWatch Australia

Ruralbiz Training

TAFE NSW

The Mulloon Institute

Be part of a greener future

To find out more about Landcare NSW or how to contribute to a more sustainable future, visit us at: www.landcarensw.org.au or join the conversation with us on social media.



landcare_nsw



LandcareNSW



LandcareNSW



Landcare_NSW



Landcare

New South Wales

Landcare NSW Office
Unit 7, 56 Church Avenue,
Mascot NSW 2020
T: 02 8339 4816
E: enquiry@landcarensw.org.au

