



Landcare
New South Wales



YEAR IN REVIEW 2021/22

LANDCARE NSW

Landcare NSW acknowledges that Australia’s First Nations people are the continued traditional custodians of caring for Country and remain the original Landcarers of our land and waters. Generational responsibilities to care for Country remain alive and are integral to Aboriginal Lore, identity, culture and social and emotional well-being.

We pay our respect to Elders, Traditional Owners, cultural practitioners and knowledge-holders of the many nations and language groups within all our regions.

“ WE CELEBRATE THE OLDEST CONTINUING LIVING CULTURE AND LOOK FORWARD TO WHAT DREAMING MAY COME. ”

Acknowledgement by Maydina Penrith, Aboriginal Engagement Manager Landcare NSW



Front Cover Image: Linda Cavanagh and Lucy Rheinberger at 2022 Bridges to Boorowa
Page 3: Savernake Station and Boat Rock Field Day - Corowa Landcare - Judy Kirk

Disclaimer: This report has been prepared from information made available to Landcare NSW at the time of preparation and is assumed to be accurate. Copyright © Landcare NSW 2022. The information and concepts contained in this document are the property of Landcare NSW for the sole purpose for which it was prepared. Landcare NSW accepts no responsibility for any third party who may rely on this document without the prior approval of Landcare NSW. Use or copying of this document, or part thereof, without the written permission of Landcare NSW constitutes an infringement of copyright.



Bellingen High School student Shae, participates in the Creating Connected, Resilient Communities Program.

TABLE OF CONTENTS

WHO WE ARE	6
CHAIR & CEO REPORT	8
LOOKING FORWARD: OUR VISION	10
TIMELINE	12
FUNDING, SUPPORT & PARTNERSHIPS	14
BUILDING CONNECTIONS	16
OUR WORK	18
IN FOCUS: NSW LANDCARE PROGRAM	20
PARLIAMENTARY FRIENDS OF LANDCARE	22
IN FOCUS: TELLING THE LANDCARE STORY	23
CREATING A CULTURE OF CONNECTIVITY & CHANGE	24
MEMBER CENTRED	25
GOVERNANCE, PARTNERS & MEMBERS	26
LANDCARE NSW MEMBERS	28



WHO WE ARE

Landcare NSW is the conduit between local Landcare communities and key decision makers, working to ensure that the thousands of Landcare volunteers and supporters across the state can focus on what is important to them.

We provide leadership, skills, resources and representation for those who are contributing to creating resilience and building communities across the state.

We value the grassroots connections that groups have with their local regions. Our aim is to support and elevate the work of every group, recognising their diversity while building on the threads which are common to all Landcarers.

We generate revenue from diverse streams to support our member Landcare groups and provide financial support for vital projects that bring together farmers, landowners, conservationists and nature lovers at a local level to address local issues.

We coordinate and facilitate the building of skills and capacity while working to strengthen connections and partnerships at every level, from individual volunteers and groups to district networks and regional associations.

Landcare is a community-driven approach to sustainable natural resource management, with a focus on improving the resilience of the environment now and into the future.

“ WE SUPPORT LANDCARERS AND OUR MEMBERS, SO LOCAL COMMUNITIES AND ENVIRONMENTS CAN FLOURISH. ”



Hunter Valley Wine Country Landcare Vineyards Tree Planting - Stacy Mail

REPORT FROM CHAIR & CEO

Landcare has never been more important, and your work has never been more valuable, and as we write this report, we are incredibly proud of the achievements that have been made not only under the banner of Landcare NSW, but by the many Landcare communities and the individuals who make them thrive.

During the 2021/2022 financial year we have learned a lot about how to adapt and find new ways to connect as leaders and as Landcarers. We have made significant progress in the key focus areas for Landcare, which is extremely rewarding, and we're committed to continuing the work that needs to be done to embed a culture that enables the NSW Landcare community to be more resilient.

We are particularly proud to say that our new constitution for Landcare NSW Limited was adopted by a Special General Meeting held in November last year in 2021 and came into effect from 1 July 2022.

The new governance arrangements are a culmination of two years' worth of consultation and collaboration with the NSW Landcare community. The result is a greatly improved representative process for Landcare NSW. The changes increase representative democracy and, importantly, put Landcare group members in direct control of a Board of Directors that is drawn from all parts of NSW. The system we now have in place will ensure that Landcare NSW can deliver on our purpose and prepare for future growth, 'connecting up' the various parts of the governance system to create a unified voice for Landcare in NSW.

Our 'job' as the state peak body is to provide valuable services to our members. As we travelled throughout the state and within our local areas, we saw first-hand the ability of a Landcare group to get work done on their local patch comes down to good solid support. We all know Landcare works best when the volunteers involved can focus on caring for the land.

In 2022, Landcare NSW provided valuable services to our members through exclusive partnership opportunities including with organisations such as:

- The \$1.3 million Partnering in Private Land Conservation project with the Biodiversity Conservation Trust
- Secured close to \$5 million in funding for local Landcare groups to deliver on-ground projects through the Landcare Led Bushfire Recovery Grants
- Delivered valuable on-ground projects through the 84 Landcare Coordinators employed as part of the NSW Landcare Program

It has also been critical to replicate the successful co-governance arrangements we have in place with government agencies such as the Department of Planning and Environment, the Biodiversity Conservation Trust and Local Land Services.

Alliances and partnerships such as these strengthen the work Landcare does, and the model of co-governance, co-management and co-delivery amplifies and spreads the benefits of Landcare across government, agencies, partners, and the broader community.

Landcare is a volunteer movement, and without paid services and resources in place to support local groups, volunteer burnout will continue to be a major risk. We are exploring a refreshed program and various funding initiatives to ensure the outstanding work contributed by NSW's strong volunteer Landcare community continues, and we are committed to working with all of you to achieve this.

Everything we do at Landcare NSW is in the interests of our members, and nothing we do at Landcare NSW could be achieved without the support of our wonderful team.

We would like to publicly thank our

dedicated executive committee members Vice Chair Bev Debrincat (retired), Treasurer Hunter White, Secretary Marg Applebee (retired), Gareth Johnston, Kathy Kelly, Georgia Rivers (retired), Bruce Rolph and Adrian Wells (retired) and the dedicated staff at Landcare NSW who work tirelessly to support our members and the important work they do on-ground for our environment.

We feel energised and excited as the Landcare movement enters a new phase of growth, recognition and importance during the coming year.

Remember, the single most important thing every group, big or small, incorporated or unincorporated, can do to ensure Landcare NSW can be an effective resource advocate for you, is to become a member.



“

LANDCARE WORKS BEST
WHEN THE VOLUNTEERS
INVOLVED CAN FOCUS ON
CARING FOR THE LAND.

”

Steph Cameron, Chair Turlough Guerin, CEO

Right: Steph Cameron, Chair
Left: Turlough Guerin, CEO

A LOOK TO THE FUTURE

Landcare is about our environment – but it’s also so much more. It is also about bringing people together to co-create strong cultural foundations, structures and practices for working well together into the future, and to ensure Landcare in NSW flourishes and grows.

The amazing diversity of the Landcare movement is both a challenge and a strength. This diversity presents us with real opportunities to innovate, and it should be celebrated. It sits at the heart of our purpose: “We support Landcarers and our members, so local communities and environments can flourish”.

We enable our members, not only to do the on-ground work that is so important in the regions, but to achieve

the recognition for their contribution to the health of our state’s natural capital.

The work of Landcarers is vital, valuable and greatly under recognised. We want every person associated with Landcare NSW to feel seen, heard and incredibly proud.

We are working to widen the definition of what Landcaring is while continuing to focus on our core – which is our members.

Landcarers are bound together in their mission, and they support and value each other. As we say, “Landcare is people care”.

In 2022, we have set a bold vision because what we do matters.

OUR VISION

1 MILLION LANDCARERS BY 2040

By 2040, we want at least one million people in NSW to identify themselves as being part of the Landcare movement. We want everyone who contributes to the broad goal of improving our environment to feel aligned. To call themselves a Landcarer.

By promoting the value of Landcaring in every shape and form, we make it easier to attract funding, to recruit new members, and, importantly, to achieve the core aims that we all share, promoting agricultural stewardship and conserving our natural capital.

People must feel passionate, proud, inspired, united and supported.

To do this, we have identified important aims that will drive our strategic plan for the next five years.

- Being recognised as a collaborative partner that provides mutual benefit and shared success.
- Building trust within the team, across our Coordinator network, our State Advisory Council, Board and partners.
- Providing statewide advocacy that recognises the value of grassroots volunteers and keeping it at the core of our ethos.
- Creating new value in national conversations of environmental management and agricultural production.
- Continuing to work to create a unified national voice.

KEY FOCUS AREAS



1. DIGITALISATION

Simplicity in process means more time for doing what matters. We will find ways to improve how we gather data, share knowledge and event information among our community.

Streamlined reporting and improved communications will make it much easier to interact with our partners and stakeholders. This includes gathering the insights and positive stories we need to tell our story and engage potential partners and funders, in a way that does not burden members with administrative detail. This will allow our members to get on with what they are passionate about – caring for the land.



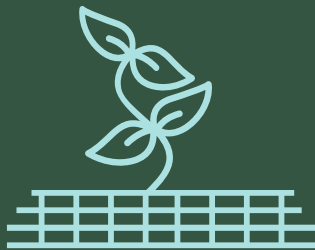
2. CREATE A SUPPLY CHAIN FOR NATURAL CAPITAL

Landcare NSW will seek opportunities to more fully engage with the national conversation around natural capital and play a role in shaping the establishment of natural capital markets. We will work to implement projects and programs that support Landcarers to contribute to the achievement of biodiversity, carbon abatement and natural capital outcomes across the state.



3. A DIVERSE CULTURE

Culture is at the heart of every organisation. We are focusing on developing a culture within Landcare NSW that leads people to say, “I want to be part of that”. This will come through creating open discourse and building trust through a stronger focus on collaboration and supporting a diversity of culture. We will foster a culture that will attract diverse people and motivate all generations to get involved.



4. GROW OUR INVESTOR BASE

Landcarers across the state can only do their critical work if they are adequately funded. A strong, engaged and diverse investor base is the foundation on which programs rest. We will continue to grow and diversify our investor and resource base and in particular, we will build on the strong partnerships we have with government and continue to explore private and philanthropic sources.



5. STRENGTHEN FOUNDATIONS

We are working on a number of new approaches and new initiatives, but we will continue to give due attention to the proven programs, partners and processes which have helped create the success story that Landcare NSW already is. In particular, we will continue to nurture our main funded Program, underwritten by NSW Government and co-delivered with NSW Local Land Services.

HOW WE'LL GET IT DONE

APRIL 2022

Our cultural change and leadership program is initiated for the Landcare NSW Staff

JULY 2022

Our cultural change and leadership program is initiated for the Landcare NSW Board and State Advisory Council

AUGUST 2022

Initiate our Natural Capital Supply Chain Project (also known as the "Nursery or Seed library" Project)

OCTOBER 2022

Release the next 4-year NSW Landcare Program Business Case

Implement the Governance Project (also known as "Connecting up Landcare in NSW")

.....

2022

FEBRUARY 2023

Release our 5-year communication strategy and plan

MARCH 2023

CEO and staff team members to actively engage in events across all 11 Landcare NSW regions

.....

2023

JUNE 2023

Publish our Investment Plan for the Natural Capital Supply Chain Project (also known as the "Nursery or Seed library" Project)

JULY 2023

Initiate implementation of the next 4-year NSW Landcare Program

DECEMBER 2023

A Landcare survey developed with our community and partners and released to measure our levels of engagement, partner and member satisfaction and on-ground contributions

Publish our Digital Landcare Strategy

Continue to work to create a unified national voice

JUNE 2024

Secure investment for our Natural Capital Supply Chain Project (also known as the "Nursery or Seed library" Project)

Introduce and implement our Digital Landcare Strategy

JUNE 2025

Three new Landcare-Led Programs, in addition to our NSW Landcare Program (funded by NSW Primary Industries), established and funded to support our purpose and vision

JULY 2027

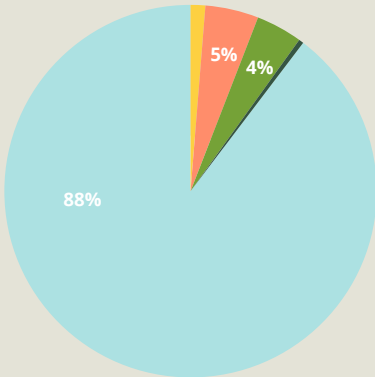
Complete the current and design the next 4-year NSW Landcare Program

.....

2027

FUNDING & SUPPORT FOR LANDCARE IN NSW

The diversification of revenue streams for Landcare NSW is a priority for the organisation and its ability to support the work Landcarers do across the state.



WHERE OUR MONEY COMES FROM

- MEMBERSHIP - 2%
- FEE FOR SERVICE (NON-GOVERNMENT) - 4%
- GOVERNMENT GRANTS - 88%
- DONATIONS - 1%
- OTHER - 5%

RESOURCES IN THE RIGHT PLACES

50% REGIONALLY BASED STAFF

VS

69% PROJECT STAFF

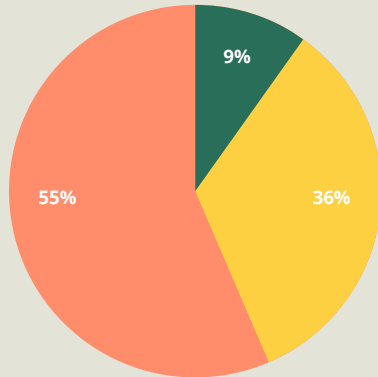
VS

50% METRO BASED STAFF

31% ADMIN STAFF

*Remediation includes rehabilitation, re-vegetation, invasive weed/pest control, native seed collection flora and fauna monitoring etc. Education includes information provision, workshops regarding environmental sustainability and application of skills to improve the environment.

Research is to support above activities.



HOW YOUR DONATIONS ARE USED

- RESEARCH - 9%
- EDUCATION* - 36%
- ON GROUND REMEDIATION* - 55%

PARTNERSHIPS & SUPPORT

We will build the capacity of Landcare NSW and its member groups into a compelling, influential, financially sustainable and agile Landcare movement in NSW that continually delivers positive impact and value to funders, partners and ultimately our land, environment and communities.

Throughout 2021/2022, Landcare NSW worked to support our community spread across the breadth of NSW. By empowering our community to grow their capacity and impact, we are better able to support our work as the peak representative body for community Landcare in NSW.

By developing new partnerships to support the work our community undertakes, we are helping to strengthen the foundations that support the NSW Landcare community and empowering them to undertake the work that they do best - caring for our land and our communities.

“LANDCARE IS PEOPLE CARE.”

Bridges to Boorowa
2022 volunteer





BUILDING CONNECTIONS

60,336

TREES PLANTED AS PART OF THE
CREATING CANOPIES IN GREATER
SYDNEY PROJECT



8

PROJECTS
FUNDED

5,300

ACTIVITIES ORGANISED OR
SUPPORTED BY LANDCARE
COORDINATORS*



32

WORKSHOPS HELD AS PART OF
THE PARTNERING IN PRIVATE LAND
CONSERVATION PROJECT

\$22.4M

MILLION NSW LANDCARE PROGRAM
FUNDING SHARED WITH 60 HOST
ORGANISATIONS OVER 4 YEARS



23,860

PEOPLE REACHED THROUGH
OUR ONLINE PRESENCE



88%

OF ALL FUNDING SHARED
WITH LANDCARE NSW
NETWORK



121k

LABOUR HOURS BEING CONTRIBUTED TO LANDCARE
THROUGH THE NSW LANDCARE PROGRAM

OUR WORK

PARTNERING IN PRIVATE LAND CONSERVATION

A co-delivered, community guided program, the Partnering In Private Land Conservation project aims to support the NSW Landcare community to collaborate and facilitate private land conservation activities, educate the community about Private Land Conservation activities and opportunities and communicate the value of these activities.

With funding from the NSW Government, Landcare NSW worked with the Biodiversity Conservation Trust and the NSW Landcare community to deliver community workshops, field days, education and communications products and networking opportunities across 11 regions to better support biodiversity outcomes and opportunities within the Landcare community.

Forster Planting Day
Joel Dunn



CREATING CANOPIES IN GREATER SYDNEY

During 2021, the Creating Canopies in Greater Sydney project planted 60,336 trees across 50 planting sites in the Greater Sydney area.

The project focuses on reducing the impacts of urban heat whilst also increasing the biodiversity available in the Sydney region. A key goal of the project is to engage community members in Landcare activities and to encourage the understanding of the importance of improving habitat and shade for communities and the environment in urban areas.

Through this project, the Greater Sydney Landcare Network has worked with hundreds of volunteers to plant trees on public and private land across Greater Sydney. The NSW Government proudly funds the project under the Greening Our City priority to increase tree canopy and green cover across Greater Sydney by planting one million new trees by 2022.

DRIVING FISH HABITAT ACTION

The Driving Fish Habitat Action Project has been developed through a partnership between Landcare NSW and OzFish Unlimited to provide opportunities for joint projects between Landcare NSW member groups and local OzFish chapters.

The joint projects have focused on successfully delivering waterway restoration works across New South Wales. These works have assisted with the protection of critical waterways, built environmental stewardship, and allowed volunteers to enjoy the outdoors and participate in community educational programs.

Throughout 2021 our partnership helped deliver fifteen projects across NSW's waterways with over \$100,000 in funding and over \$500,000 of in-kind value directly delivered to Landcare NSW member groups.

LANDCARE LED BUSHFIRE RECOVERY FUND

The Landcare Led Bushfire Recovery program funded 54 projects across NSW to help support priority recovery activities across NSW.

These projects focused on species and habitat restoration in regions severely affected by the 2019/2020 Bushfires.

The projects were from diverse community groups focusing on strong community capacity for bushfire recovery and ecological restoration. The \$5 million in funding was secured for NSW projects as part of the \$14 million facilitated grants program jointly managed between the National Landcare Network, Landcare Australia, and State and Territory Landcare organisations, including Landcare NSW.

The Landcare Led Bushfire Recovery program was funded through the Australian Government's Bushfire Recovery Program for Wildlife and their Habitat.

WORKING TOGETHER PROGRAM

The Working Together Aboriginal Community Engagement Program is a crucial component of the NSW Landcare Program and works to build active engagement between the Landcare movement and Aboriginal people.

Landcare NSW acknowledges First Nations peoples as the First Landcarers, recognising the importance of the intrinsic value between the health of our environment and its connectivity to the health of our communities.

The Working Together Program builds on this knowledge and is about strengthening the ties between Aboriginal community groups and organisations and the NSW Landcare community to grow in strength and understanding.

In 2021/2022 Landcare NSW supported the establishment of two new Aboriginal Engagement Officers in the North Coast and Riverina.

CASE STUDY

CREATING CONNECTED, RESILIENT COMMUNITIES PROGRAM

The Creating Connected, Resilient Communities program is aimed at building community resilience at Bellingen High School and within the Bellingen community. The Program, affectionately known as 'Eat Dirt', is being funded by a \$290,000 grant from the NSW Government's Bushfire Community Recovery and Resilience Fund.

Landcare NSW, Gotcha4Life and Surf Life Saving NSW (SLSNSW) have partnered to deliver the program with the aim of zero suicides by looking at all elements of resilience in communities where people are mentally and physically fit, connected to country, to nature and to each other.

The project is being delivered to a class of 20 Year 8 Bellingen High School students who participate in a range of activities to enhance their creativity and critical thinking.

The program began in May 2022, with students taking part in bush regeneration activities, learning Gumbaynggirr – the local Aboriginal language - and taking part in a range of nature-based and art activities. All learning takes place outside amongst the cows, with the new lambs a highlight for students.

The program is an example of adaptive management in action as the facilitators aim to deliver a program that engages all the students.

Eat Dirt.
By Charlee Troy

(Since it began), the class 8R from Bellingen High School have been working alongside the bush regeneration team, taking part in numerous hands-on activities. These activities have given us a break from technology and being stuck in a classroom. This has given us an amazing opportunity to have access to this very different way of learning.

One of our main projects that we have been focusing on is trying to catch the 11 Koi Carp that have accidentally been released into the Cemetery Creek. We have tried numerous methods to catch the fish such as bait on a fishing line, netting and an Aboriginal method – which was using crushed

wattle to dissolve the oxygen. Uncle Micklo has been working with us. He started off by welcoming us to the land and has been educating us on the Indigenous culture through Dreaming Stories and eating diverse foods made from the fruit of the land.

Another big part of this program is working with native plants. We have been planting quite a few seedlings with Sally from Landcare, such as Alpinia Caerulea also known as native ginger, as well as replanting some Davidson Plums and some White Aspen.

The bush regeneration team, Bart, Nick, Greg, Kim and Fin have taken us here, there and everywhere around the school teaching us how to identify weeds and how to remove them properly. They gave us a hand with planting natives, and they shared some interesting stories and past experiences and what it's really like to work as a bush regenerator.

Overall, this has been an amazing five weeks. It has definitely been different to the traditional way of learning, but we would all agree it has been extremely enjoyable and successful. Being able to work together as a team and having the ability to take away knowledge of the natural environment is a privilege, and we would all like to say "thank you very much" to all of the people who helped us throughout this program.



STATS



15

RIPARIAN WORKS
UNDERTAKEN THROUGH
OZFISH PARTNERSHIP



50

NEW PLANTING SITES
WITH THE CREATING
CANOPIES PROJECT

12



REGIONAL COMMUNITY
WORKSHOPS HELD FOR
PARTNERING PRIVATE
LAND CONSERVATION

\$4,271,963

MILLION FUNDING
SECURED FOR NSW IN THE
LANDCARE LED BUSHFIRE
RELIEF FUND

Creating Connected, Resilient
Communities Program
Melanie Tyas

IN FOCUS: NSW LANDCARE PROGRAM

CASE STUDY

The NSW Landcare Program, funded by the State Government and co-delivered through a partnership between Landcare NSW and Local Land Services, employs 12 Regional Landcare Coordinators and 72 Local Landcare Coordinators across NSW. These coordinators work directly with Landcare groups to improve their governance, communication, partnerships and ability to coordinate on-ground activities.

With a focus on supporting and enabling local Landcare and community groups to deliver on-ground action for the environment and communities, the NSW Landcare Program plays a crucial role as a model to empower communities to deliver long-lasting, high impact change.

The program is comprised of a number of components: Local and Regional Landcare Coordinators, A Community of Practice Component, People Development, Aboriginal Program and Program Management and Support.

Hosted by Landcare NSW member organisations, the Landcare Coordinators play an integral role in building the capacity of Landcare to deliver the crucial work it undertakes in supporting our environments and communities. Their activities range from revegetation works, mental health workshops, education and more.

In 2022, the NSW Landcare Program continued to deliver the high impact, high quality services to the NSW

Landcare community. The impact for direct, on-ground effort through the investment of the program continued to support 90 jobs with a recent report identifying \$86 million of benefit attributable to the Program and the work of the Landcare Coordinators, generating a net benefit of \$63.5 million and a return of \$3.83 on every dollar invested.

To date, the work of the Landcare Coordinators has led to \$27 million of on ground activity benefits, \$9.5 million in increased volunteering and \$40 million in community participation, health, wellbeing and resilience benefits. By leveraging partnerships and collaborations, the program generated \$9.2 million in additional funding benefits.

LOGAN ZINGUS AND THE LOCAL LANDCARE COORDINATOR ROLE: INVESTING IN COMMUNITY ACTION

In the Nambucca Valley, Local Landcare Coordinator (LLC) Logan Zingus, plays a crucial role in the recovery and resilience of his community. Since starting his role, he has experienced two of the most challenging years in Landcare's history, both from a community and environmental perspective.

One of his most recent projects was funded through the Landcare Led Bushfire Recovery Grants (LLBRG), which he says has helped support the role of LLC and enabled him to build on his role as Coordinator to help further build capacity in the community and directly lead to on-ground action.

"Having funding for additional projects like the LLBRG help support our (Local Landcare Coordinator) roles and help us further engage with other groups. It helps us spread the Landcare message and what we can deliver.

"Landcare goes above and beyond, and there's a mental health, resilience side of things – it can be border-line counselling, particularly when you go out in the field with the fire situation, and floods as well. Whether it's a single person who lives out on a bush block or a big dairy farmer who's been inundated with the floods, everyone has just copped it so much over the past four years and the mood has really been impacted. You can just feel it, so it's important to take our time when we are going out talking about these things. There's a strong mental health component to our role.

"One of the key benefits of the additional funding for projects is that it gives us the time and space to go and be with people. To not rush in and rush out and say 'yep, plant a tree here and sign here' and rush out. It gives us time to walk the farm and give them the space to debrief and share their story and how it affected them.

"The ongoing funding and support post disaster helps in that it's looking at the long-term needs. During the reactive part – the part straight after – people are purely focused on getting back to square one. They can't possibly think about that (revegetation) stuff. So, having ongoing funding was so important to allow people to have the time to get the basics sorted, like having a roof over their head, and we were able to say 'look we haven't forgotten about you. We know these needs are still there'.

"The irony being, in the interim, all these major floods occurred and the attention went there and it was really important to make sure that there was still focus on people and the environment's recovery from the fires and that it was being addressed."

ACHIEVEMENTS



PARLIAMENTARY FRIENDS OF LANDCARE

The NSW Parliamentary Friends of Landcare (PFL) is a cross-party group of NSW Members of Parliament who have a common interest in demonstrating support for the goals of Landcare.

The PFL provides an avenue for Members of Parliament to connect with and offer support to local Landcare, ensuring that Landcare is accurately represented and the views of members are heard and represented at a policy level.

Parliamentarians join with the NSW Landcare network and communities in events, opportunities and collectively aim to highlight the role community Landcare has in environmental and social networks.

Further celebrating and championing the contribution of community Landcare, every two years the PFL sponsor the Gerald Carne Memorial Award for Keeping the Landcare Flame Alive.

The nominees and award winner are identified as champions to the development of Landcare as a means to support and generate change in attitudes, which translates to a more cohesive and resilient community that acts to achieve a healthier environment and/or more productive and sustainable farms.

Applicants are judged on the impact they have had at the local and regional or state scale to ensure that Landcare can prosper.

PFL Chair Gurmish Singh MP, announced the 2022 Gerald Carne Memorial winner Brian Hilton at the NSW Landcare State Conference in March 2022.

IN FOCUS: TELLING THE LANDCARE STORY



Brian Hilton
Coastal Corridor Planting

Brian Hilton was awarded the 2022 Gerald Carne Memorial Award at the NSW Landcare Awards online ceremony as part of the NSW Landcare and Local Land Services Conference in recognition of his local and regional contribution to Landcare over 40 years.

The Gerald Carne Memorial Award for Keeping the Landcare Flame Alive was established by Landcare NSW to recognise Gerald's special individual contribution to the Landcare movement and to an individual who champions the Landcare movement on all levels.

A dedicated Landcare volunteer with over four decades of experience, Brian has inspired countless people during this time through his work in restoring the coastal dunes and headland environments of Redhead, NSW.

Motivated by a deep respect for native plants and wildlife and a genuine sense of responsibility to protect them, Brian decided to take action in 1975. He started work removing the dense thickets of Bitou Bush that were smothering the dunes opposite his home.

He later established Redhead Bluff Landcare where he has coordinated several major projects such as the very successful Redhead Coastal Corridor project (RCCP).

Through the RCCP, which Brian initiated to establish a vital wildlife corridor to link natural coastal areas with the neighbouring bushland and reserves, Brian developed partnerships with other Landcare groups, Lake Macquarie City Council, Lake Macquarie Landcare Volunteer Network, Redhead Sustainable Neighbourhood Group, Hunter Intrepid Landcare as well as schools, businesses, and other community groups.

Brian shares his passion for the local environment with a wide range of community groups to help others develop a sense of stewardship for coastal ecosystems.

He regularly coordinates planting and weeding days that allow other volunteers to feel a sense of pride in contributing to the bigger picture.

A strong believer in the power of engaging and educating young people about the importance of caring for our earth, Brian has hosted many school and scout/ girl guide groups at his Landcare site, teaching the next generation about our coastal environment.

He actively engages with these younger generations to demonstrate the benefits of spending time in nature, involving them in activities such as planting trees that they can observe and care for over the years to come.

Brian remains one of Lake Macquarie's most active Landcare volunteers to this day. His vast knowledge and unwavering perseverance have resulted in immeasurable benefits to the environment and wider community, and he is showing no signs of slowing down any time soon.

As he himself put it "I'll be pulling Bitou Bush seedlings till the day I drop".

“ I’LL BE PULLING BITOU BUSH SEEDLINGS TILL THE DAY I DROP. ”

POSITION HOLDERS

JULY 2021 – MARCH 2022

DUGALD SAUNDERS
THE HON MICK VEITCH
TAMARA SMITH

CHAIR – MP (MEMBER FOR DUBBO)
DEPUTY CHAIR – MLC
SECRETARY/TREASURER – MP
(MEMBER FOR BALLINA)

MARCH 2022 ONWARDS

GURMESH SINGH
THE HON MICK VEITCH
ROY BUTLER
DAVID LAYZELL

CHAIR - MP (MEMBER FOR COFFS HARBOUR)
DEPUTY CHAIR – MLC
SECRETARY - MP (MEMBER FOR BARWON)
TREASURER – MP
(MEMBER FOR UPPER HUNTER)

GENERAL MEMBERS

JENNY AITCHISON
KEVIN ANDERSON
STEPHEN BROMHEAD
ROY BUTLER
YASMIN CATLEY
JUSTIN CLANCY
STEPH COOKE
MARK COURE
TIM CRAKANTHROP
VICTOR DOMINELLO
PHILIP DONATO
DAVID ELLIOTT
JUSTIN FIELD
BEN FRANKLIN
JODIE HARRISON
SONIA HORNER
MATT KEAN
ADAM MARSHALL

JOE MCGIRR
FRED NILE
DOMINIC PERROTTET
PETER PRIMROSE
GEOFF PROVEST
JANELLE SAFFIN
PAUL SCULLY
PENNY SHARPE
GURMESH SINGH
WENDY TUCKERMAN
GARETH WARD
KATE WASHINGTON

MP (MEMBER FOR MAITLAND)
MP (MEMBER FOR TAMWORTH)
MP (MEMBER FOR MYALL LAKES)
MP (MEMBER FOR BARWON)
MP (MEMBER FOR SWANSEA)
MP (MEMBER FOR ALBURY)
MP (MEMBER FOR COOTAMUNDRA)
MP (MEMBER FOR OATLEY)
MP (MEMBER FOR NEWCASTLE)
MP (MEMBER FOR RYDE)
MP (MEMBER FOR ORANGE)
MP (MEMBER FOR BAULKHAM HILLS)
MLC
MLC
MP (MEMBER FOR CHARLESTOWN)
MP (MEMBER FOR WALLSEND)
MP (MEMBER FOR HORNSBY)
MP (MEMBER FOR NORTHERN TABLELANDS)
MP (MEMBER FOR WAGGA WAGGA)
MLC
MP (MEMBER FOR EPPING)
MLC
MP (MEMBER FOR TWEED)
MP (MEMBER FOR LISMORE)
MP (MEMBER FOR WOLLONGONG)
MLC
MP (MEMBER FOR COFFS HARBOUR)
MP (MEMBER FOR GOULBURN)
MP (MEMBER FOR KIAMA)
MP (MEMBER FOR PORT STEPHENS)

CREATING A CULTURE OF CONNECTIVITY & CHANGE

CASE STUDY

GOVERNANCE PROJECT

Everything we do is for the betterment and the benefit of our members. We reinforce our member centric approach by delivering member value, support, representation and by driving growth in membership and engagement.

As the peak representative body for the Landcare movement in NSW, the purpose of Landcare NSW is to act as a 'resource advocate' for local Landcare Groups. We recognise and support all Landcarers whilst celebrating their efforts and successes in the work they do.

With open and effective governance, all member groups are encouraged to exercise the opportunity to have a voice and directly affect the future direction and strategy of the organisation through ongoing dialogue and engagement.

Since 2020, over a two year period, Landcare NSW consulted widely across the State and has modernised its governance arrangements by approving a new constitution at a Special General Meeting held in November 2021.

The new governance structure for Landcare NSW came into effect from

1 July 2022 resulting in an enhanced democratic and transparent system for the organisation.

The new structure provides a renewed commitment to governance that continues to place the grassroots Landcarers at the heart of all Landcare NSW does with clear lines of accountability and transparency.

These changes aim to strengthen our collective voice and impact to better support the work Landcare NSW members undertake.

MEMBER CENTRED

MEMBER BENEFITS

VOTING RIGHTS

Landcare NSW member groups have a direct voice in the future direction and strategy of Landcare NSW and the wider movement with full voting rights at its annual AGM to increase our representative and inclusive stance.

MEMBERSHIP PORTAL

Member groups can access a membership portal and resource library with policy guides and templates designed to help groups grow in capacity, governance, and effective administration.

COMMUNICATION

Access to regular Landcare NSW updates via Connection newsletter, as well as key issue bulletins, funding opportunities and updates.

NETWORKING & REFERRALS

Landcare NSW has an extensive network and referral framework to link groups with new members, collaboration opportunities, media and funding exposure.

ACCESS TO LANDCARE NSW FUNDED PROGRAMS

Programs run and facilitated by Landcare NSW focus specifically on supporting members. Members-only programs include the NSW Landcare Program, Partnering In Private Land Conservation Project, Transport for NSW Re-vegetation Project and more.

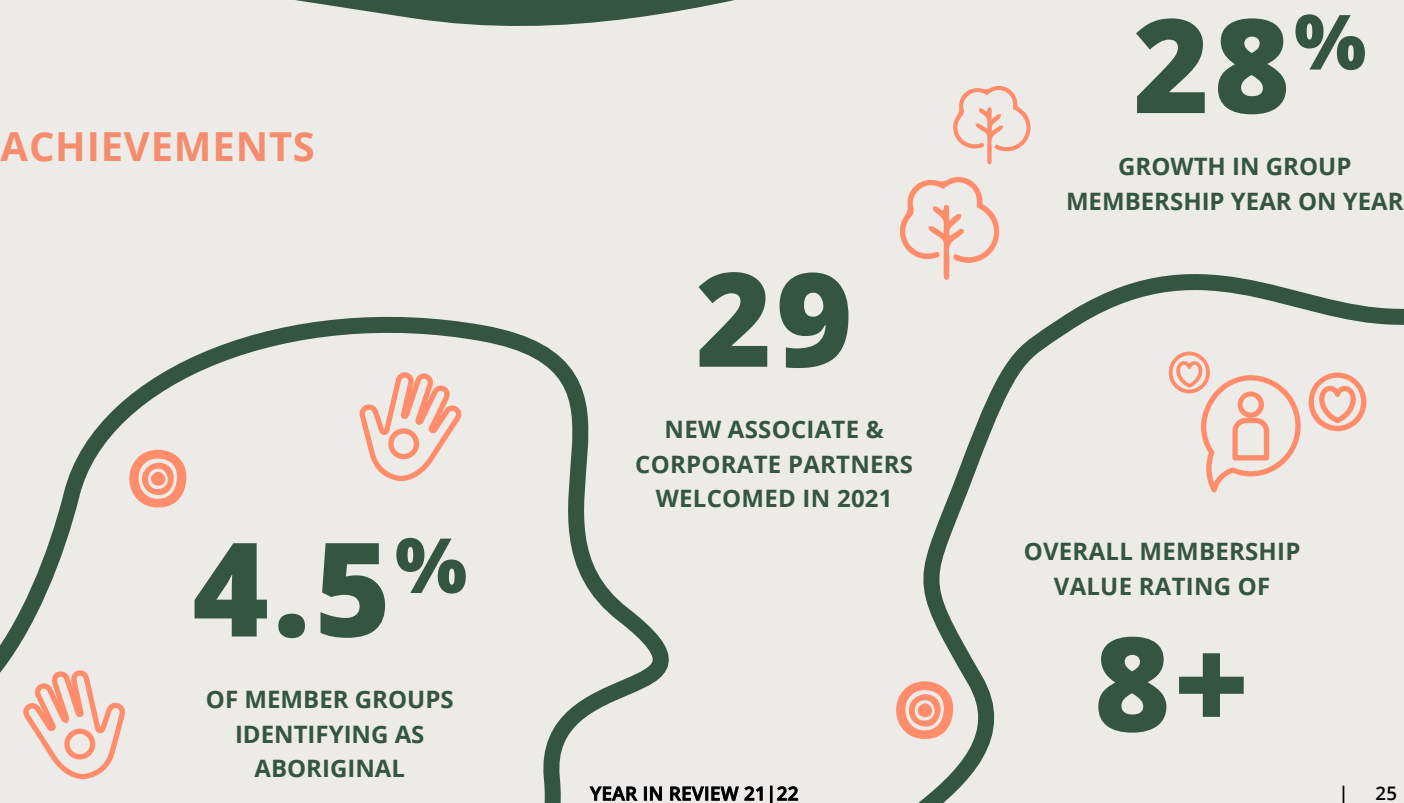
MEMBER ONLY FUNDING OPPORTUNITIES

Regular and exclusive funding opportunities are sent to Landcare NSW members.

Introduction to Bird Watching
Gunning District Landcare
Sonya Duus



ACHIEVEMENTS



GOVERNANCE

Landcare NSW is responsible for providing leadership, representing, supporting, strengthening and growing the community Landcare movement in NSW to improve the health of our natural and working landscapes.

Our structures, activities and operations meet legal requirements, have probity, are transparent and accountable.

Landcare NSW strives to meet best practice in everything it does.

2021/22

Throughout 2021/22, there were four Council Meetings and eight Executive Committee Meetings held. Two Council Meetings were held via an in-person and online hybrid model, and two online-only. The Landcare NSW Executive Committee met eight times with three in-person meetings held.

Landcare NSW Council Members; Paul Heley, Steve Harvey, Paul Quirk (2021), Stephen Thatcher (2022), Margot Jolly, Bev Debrincat, John Asquith, Robyn Lamond and Chris Roberts.

Executive Committee Members; Chair Stephanie Cameron, 2021 Vice Chair Bev Debrincat, 2022 Vice Chair Gareth Johnson, Treasurer Hunter White, 2021 Secretary Marg Applebee, 2022 Secretary Lyn Thomson, Kathy Kelly, Georgia Rivers, Bruce Rolph, Steve Bunnell (2022) and Adrian Wells.

2022 AND BEYOND

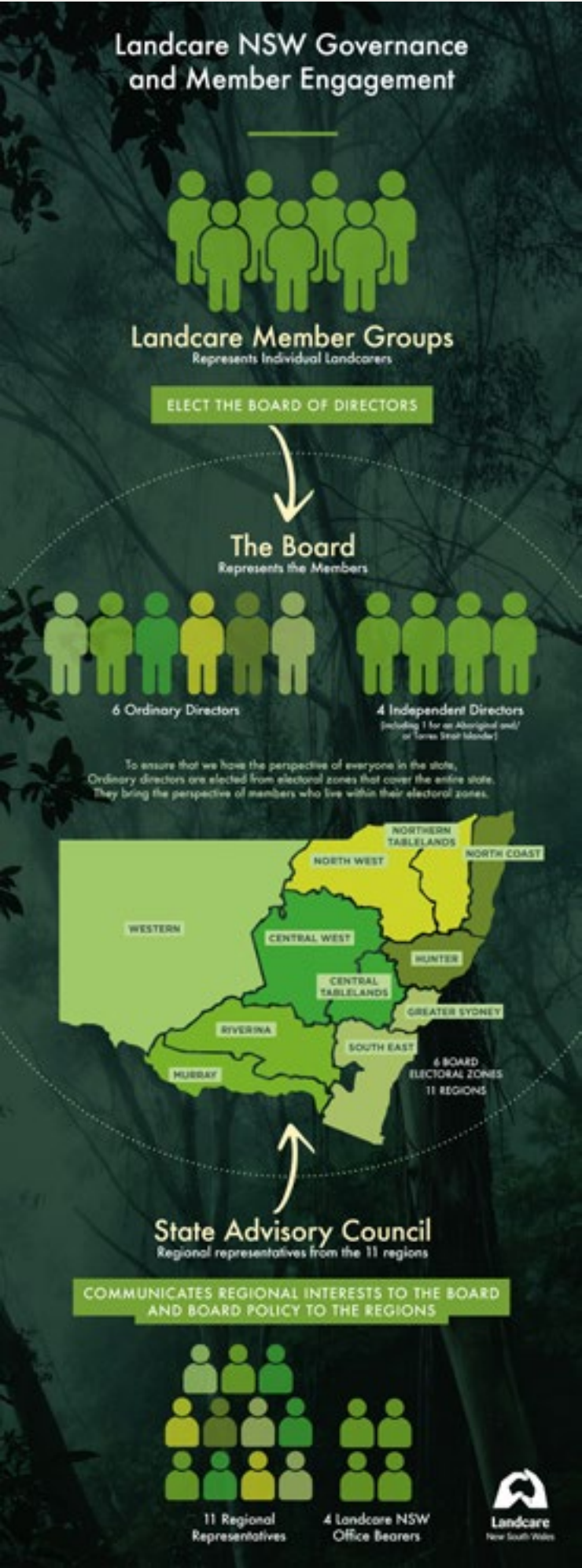
From July 2022, Landcare NSW became a company limited by guarantee and a new governance system was implemented. Landcare NSW member groups elect the Board of Directors. The directors bring the 'perspectives' of Landcarers from across the State to the Board table. The Board of Directors oversees the organisation's strategic plan and governance. They support the management team to execute the strategic plan and deliver on the mission and the vision of Landcare NSW.

The purpose of the State Advisory Council is to serve as a forum for dialogue between the 11 Regional Representatives and the Office Bearers of the Landcare NSW Board. The Regional Representatives communicate the needs of their Landcare Regions, and the Districts and Groups they represent to the Board.

“LANDCARE NSW STRIVES TO MEET BEST PRACTICE IN EVERYTHING IT DOES.”

PARTNERS

Thanks to all those who share our vision and invest in our future, including governments, investors, businesses, philanthropists, volunteers, members, and delivery partners.



MEMBERS

ASSOCIATE MEMBERS

Murray Darling Wetlands Working Group
Carbon eight
TSL Services
Local Government NSW
Hawkesbury River County Council
Cooks River Alliance
Roberts & Morrow
Parramatta River Catchment Group
Shona Joy
Fields Environmental Services Pty
Ross Hill Wines
TAFE NSW
OceanWatch Australia
IndigiGrow Native Plant Nursery
Lake Cowal Foundation
Narromine Shire Council
Ruralbiz Training
Cavan Station
The Mulloon Institute
Sydney Water
NSW Golf Course Superintendents Association
South Pole Australia Pty Ltd
Australian Turf Analysis

GROUP MEMBERS

Abermain District Landcare Group Inc
All Sustainable Futures Inc
Arding Landcare Group Inc
Armidale Urban Rivercare Group
Ashby Land Regeneration
Bangalley Head Landcare Group Inc
Bangalow Land and Rivercare Group Inc
Barham Landcare Group Inc
Barrabaroo Landcare Inc.
Barragal Landcare Group Inc
Barriekneal Housing and Community Ltd
Barrier Area Rangelcare Group
Bass Sydney Fishing Club Inc
Bega River and Wetlands Landcare Group Inc
Bellinger Landcare Inc
Bemboka Landcare Group Inc
Ben Lomond Landcare Group Inc
Berry Landcare Inc
Bingman Catchment Landcare Group Inc
Blue Mountains Wildplant Rescue Service Inc
Bogan Baiters
Boorowa Community Landcare Group Inc
Border Ranges-Richmond Valley Landcare Network Inc
Boundary Road Reserve Landcare Group Inc
Bowning-Bookham Districts Landcare Inc
Braidwood Urban Landcare Group Inc
Bredbo Community Landcare Group Inc

Broke/Bulga Landcare Group Inc
Brunswick Valley Landcare Inc
Buckwaroon Landcare Group Inc
Bungowannah/Splitters Creek Landcare Group
Callan Park Bushcare Inc
Camden Wombats Landcare
Capertee Valley Landcare Inc
Cargelligo Wetlands and Lakes Council Inc
Carwoola Community Association Inc
Cattai Hills Environment Network (CHEN) Inc
Central Tablelands Landcare Inc
Central West Lachlan Landcare Inc
Clarence Landcare Inc
Clarence Native Bees Inc
Clarence Valley Conservation In Action (CVCIA Landcare) Inc
Clean 4 Shore NSW Inc
Coal Point Progress Association Landcare Group
Coffs Harbour Regional Landcare Inc
Colly Gamilaraay Indigenous Corporation
Community Environment Network Inc
Community Voice for Hume
Condobolin and District Landcare Management Committee Inc
Cooks Myalls Landcare Group
Coolamon Landcare Group Inc
Cooma Landcare Inc
Coonamble Neighbourhood Centre Inc
Corowa District Landcare Inc
Culgoa Vertebrate Pest Management Group
Cumberland Land Conservancy Inc
Deni Community Garden Inc
Deniliquin Kolety Lagoons Landcare Group Inc
Dignams Creek Community Group Inc
Dorrigo Community Nursery Inc
Dubbo Rivercare Group Inc
Dunedoo Area Community Group Inc
Earthcare Park Landcare Group Inc
Eastern Riverina Landcare Group Inc
Edward Wakool Angling Association
Eurobodalla Landcare Network Inc
Euston Regional Landcare Inc
Far South Coast Landcare Association Inc
Farm on the Green Inc
Farrants Hill-Top Bush Care
Fingal Head Coastcare Inc
Foxground Landcare group Inc
Friends of Myall Creek Memorial Inc
Friends of the Colo Inc
Friends of the Mongarlowe River Inc
Friends of the Schoolmasters House Inc
Friends of Tomaree National Park
Fullerton Hadley Landcare Group Inc
Garland Landcare Group Inc
Geary's Gap/Wamboin Landcare Group Inc
Georgica Sustainable Farming Landcare Group Inc
Gilgunnia Landcare Inc
GLENRAC INC
Gol Gol Community Reference Group Inc
Goonellabah Tucki Creek Landcare Inc

Goonengerry Landcare Group Inc
Grabine Foggs Crossing Landcare Group
Granite Borders Landcare Committee Inc
Grass Roots Mentoring Group
Greater Sydney Landcare Network Inc
Gresford District Landcare Group Inc
Grogan Landcare Group Inc
Gumbee Bunung
Gunnedah Urban Landcare Group Inc
Gunnible Landcare Inc
Gunning District Landcare Inc
Gwymac Inc
Harden Murrumburrah Landcare Group Inc
Hastings Landcare Inc
Hawkesbury Environment Network Inc
Hawkesbury-Nepean Landcare Network
Hay Local Aboriginal Land Council
Hay Trees on Plains Landcare Group Inc
Heffernans Creek Catchment Landcare Group
Helensburgh & Districts Landcare Group Inc
Holbrook Landcare Network
Homebush Landcare Group Inc
Hovells Creek Landcare Group Inc
Hunter Biodynamic Group Inc
Hunter Region Landcare Network Inc
Hunter Sustainability Landcare TEAM
Hunter Valley Wine Country Landcare
International Environmental Weed Foundation
t/a Habitat Network
Kangaroo Valley Environment Group Inc
Kangaroooby Catchment Landcare Group Inc
Karangi Landcare Group Inc
Karuah & Great Lakes Landcare Inc
Killabakh and Lower Cedar Party Landcare Inc
Koonenberry NRM Inc
Koori Country Cultural Fire Aboriginal Corporation.
Kyogle Landcare Group Inc
Lachlandcare Inc
Lake Macquarie Landcare Network Inc
Lambs Valley Community and Landcare Inc
Landcare Broken Hill Inc
Landcare Illawarra
Ledknapper Wild Dog Action Group Inc
Lets Keep it Cool Inc
Lightning Ridge Local Aboriginal Land Council
Lithgow Oberon Landcare Association Inc
Little Bay Landcare
Little River Landcare Group Inc
Lower Anabranh Farming Innovation Group
Lower Anabranh Sporting and Landcare Group Inc
Lower Lachlan Landcare Group Inc
Lower Paterson River Landcare Inc
Luskintyre Landcare Group Inc.
MacDonald Valley Landcare Group
Mackellar Range Landcare
Maclean Landcare Group Inc
Macleay Landcare Network Inc
Manning Coastcare Group Inc

Manning Landcare Inc
Martindale Creek Catchment Landcare Inc
McCullys Gap Rehabilitation & Sustainability Community Group Inc
Megalong Street Landcare Group Inc
Michelago & District Landcare Group Inc
Mid Coast 2 Tops Landcare Connection
Mid Coast Dairy Advancement Group
Mid Lachlan Landcare Inc
Mid Macquarie Landcare Inc
Milton Rural Landcare Inc
Mogriguy Creek Landcare Group Inc
Molonglo Conservation Group
Mt Hope Pest Control Group Inc
Mudgee Local Aboriginal Land Council
Mulgoa Valley Landcare Group Inc
Murrakool Land for Wildlife
Murrumbateman Landcare Group Inc
Murrumbidgee Landcare Association Inc
Muttama Creek Landcare Group
Nambucca Valley Landcare Inc
Nana Glen Landcare Group Inc
Nangarin Landcare Group
Napoleon Reef Land Care Inc
Nari Nari Tribal Council
NBK Pest Management Group Inc
New England Landcare Network Inc
Ngurra Guril Aboriginal Corporation
Nimbin Community Centre Inc
North Coast Regional Landcare Network Inc
North West Plains Sustainability Group Inc
Northern Slopes Landcare Association Inc
Northside Progress Association Inc
NSW Malleefowl Recovery Group
Numeralla & District Landcare Group Inc
North West Landcarers
Nymboida Landcare Inc
OPEL Outback Pest Elimination League
Orara Valley RiverCare Groups Management Committee Inc
Pappinbarra Valley Landcare Group
Petaurus Education Group Inc
Pittwater Natural Heritage Association Inc
Pyrmont Ultimo Landcare Inc
Queanbeyan Landcare Inc
Rainforest Peace Center Inc
Razorback Environment Protection Society Inc
ReForest Now Inc
Regen Action Inc
Ricegrowers' Association of Australia
Richmond Landcare Inc
Riverina Highlands Landcare Network Inc
Rollands Plains Landcare Group Inc
Roseberry Creek Landcare Inc
Royalla Landcare Inc
Sandon Environmental Alliance Inc
Scone Landcare Inc
Shoalhaven Landcare Association Inc
Shoalhaven Riverwatch Inc
Singleton Shire Landcare Network Inc
Small Farms Network

South Coffs Community Garden Inc
South East Landcare Inc
South Lismore Duck Pond Landcare Inc
Southern Highlands Landcare Network
Southern New England Landcare Ltd
St Anthonys Kierans Creek Landcare Group
St Mary's Public School Landcare Group
Summer Hill Creekcare Inc
Talyawalka Pest Management Group Inc
Tamworth Regional Landcare Association Inc
Tamworth Urban Landcare Group Inc
Tarago Landcare Group Inc
Tarcutta Valley Landcare Group Inc
Taree Landcare Group
Tenterfield Wild Dog Control Group Inc
The Australian Landscape Science Institute Ltd
The Happy Hens Social Enterprise Inc
The Still Creek Catchment Landcare Group Inc
The Wollombi Valley Landcare Group Inc
The Woolshed Thurgoona Landcare Group Inc
Three Valleys Landcare Group Inc
Tilpa Community Committee Inc
Top Table Farm Group (Estate of the late HC Pollard)
Topar Area Rangelcare Group
Towamba Valley Landcare Group Inc
Trees in Newcastle (T.I.N) Inc
Trees on Farms Mount Vincent Landcare Inc
Tregeagle Land Care Group Inc
Tullimbar Village Community Garden Inc
Tweed Landcare Inc
Upper Clarence Combined Landcare Inc
Upper Deua Catchment Landcare Group Inc
Upper Kangaroo Valley Landcare Group Inc
Upper Lachlan Landcare Inc
Upper Molong Creek Landcare Group Inc
Upper Mooki Landcare Inc
Upper Murrumbidgee Landcare Committee Inc
Upper Shoalhaven Landcare Council Inc
Upper Snowy Landcare Network Inc
Upper Spring Creek Landcare
Urabba Parks Pty Ltd
Urabrible Landcare Group Inc
Wagga Wagga Urban Landcare Group Inc
Wanaaring Pest Management Group Inc
Warrego Landcare Group Inc
Warrego-Paroo Pest Management Group
Watershed Landcare Group Inc
Websters Creek Landcare Group
Weddin Landcare Steering Committee Inc
West Hume Landcare Inc.
Western Landcare NSW Inc
Western Murray Land Improvement Group Inc
Wherrol Flat & Caparra Landcare Inc
Whian Whian Landcare Inc
Wilsons Creek Huonbrook Landcare Inc
Wilsons River Landcare Group Inc
WINZERO Inc
Wiradjuri Cultural And Environmental Rangers
Yanco Creek and Tributaries Advisory Councils
Yarrabin Cultural Connections Pty Ltd

Yass Area Network of Landcare Groups Inc
Yass Landcare Group Inc
Yawiriawira Murri Ganuur Descendants
Aboriginal Corporation
Young District Landcare Ltd
Yowrie Valley Landcare Inc
Yuraygir Landcare Group Inc
Z-NET Uralla Community Centre



We work to ensure that local Landcare communities are supported to undertake their work by providing leadership, advocacy, resources and representation.

To be part of a greener and more sustainable future;

PLEASE JOIN US

BECOME MEMBER

DONATE to support our work

CONNECT WITH US ON SOCIAL MEDIA

FACEBOOK

TWITTER

INSTAGRAM

LINKEDIN