



Landcare
New South Wales

**INVEST IN LANDCARE
MAKE A DIFFERENCE**



WHAT IS LANDCARE NSW?

Landcare NSW is a not-for-profit, peak representative body for community Landcare.

With over 60,000 active Landcarers and 3,000 groups in NSW, Landcare NSW acts as the conduit between corporate sponsors, local Landcare communities and key decision makers. We work to ensure that local Landcare communities are supported to undertake their valuable work by providing leadership, advocacy, resources and representation.

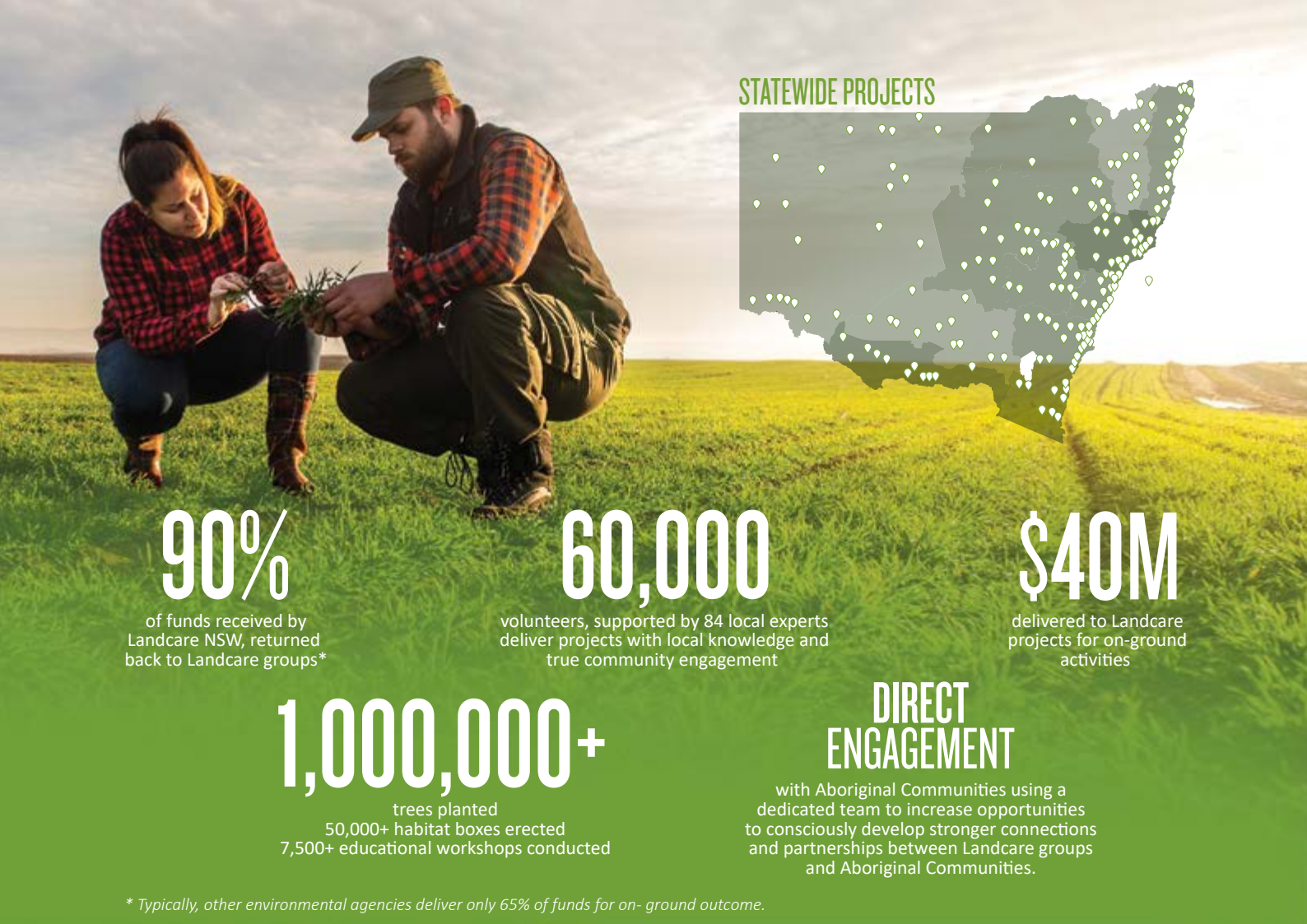
Most importantly, we want the Landcare movement to be recognised by government, corporates, philanthropists and the general community as the most effective, impactful and influential 'go-to vehicle' for the management of our land, its living environment and communities in rural and urban areas.

We coordinate the building of capacity, connections and partnerships at every level, from individual volunteers to Landcare groups at the local, district and regional level.

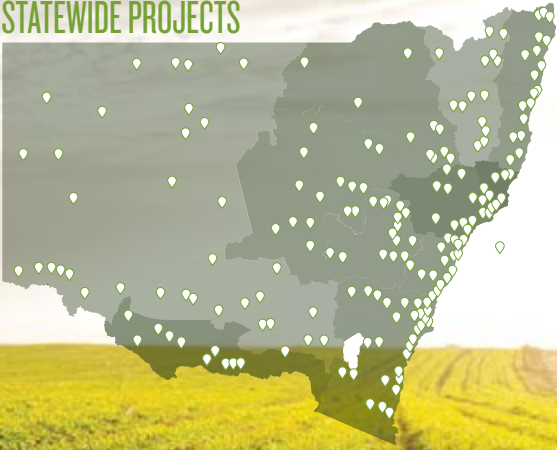
WHY INVEST IN LANDCARE NSW?

Social Heart – Business Mind

- We'll work with you to create a package and engagement with our network that suits your organisation's objectives.
- Landcare NSW is perfectly placed to work with you to deliver your environmental, social and governance (ESG) goals. Whether it's putting your investment towards a specific project or engaging your staff in volunteering.
- Partner with us and our highly recognised brand to show your customers, partners and staff what's important to you and your business.
- Investment in Landcare NSW is a tangible investment in local communities. Landcare NSW prides itself on the purpose and social connection our projects and activities give members and volunteers. Your investment will support those communities as much as the environment they work so hard to protect and improve.
- Landcare NSW is committed to ensuring overheads are kept to a minimum, with 90% of revenue put directly back into projects. As a not-for-profit organisation with transparent governance practices we raise corporate sponsorship for Landcare initiatives and heighten community awareness of our programs and our sponsor organisations.
- You'll be making a big difference, right here in our own backyard – NSW.



STATEWIDE PROJECTS



90%

of funds received by Landcare NSW, returned back to Landcare groups*

60,000

volunteers, supported by 84 local experts deliver projects with local knowledge and true community engagement

\$40M

delivered to Landcare projects for on-ground activities

1,000,000+

trees planted
50,000+ habitat boxes erected
7,500+ educational workshops conducted

DIRECT ENGAGEMENT

with Aboriginal Communities using a dedicated team to increase opportunities to consciously develop stronger connections and partnerships between Landcare groups and Aboriginal Communities.

* Typically, other environmental agencies deliver only 65% of funds for on- ground outcome.

WHAT TYPE OF PROJECTS WOULD MY INVESTMENT GO TOWARDS?

Types of environmental Landcare activities include:

- Landscape and environmental protection & rehabilitation, including pest and weed control management
- Revegetation and replanting in urban, rural and coastal areas
- Erosion repair and mitigation
- Seed collection, propagation and native nurseries. Protecting threatened flora, fauna and animal species and native habitats
- Extensive educational workshops, community demonstrations and field days
- Working with local councils on coordinating community action & on ground activities
- Aboriginal Cultural Heritage awareness and education
- Supporting Cultural Fire Management.

Types of agricultural Landcare activities include:

- Sustainable Agriculture techniques
- Regenerative farming practice
- Feral animal control programs
- Drought management programs
- Mental and Rural health initiatives
- ChemCERT accreditation and training
- Soil carbon sequestration and biodiversity offsetting
- Managing climate variability
- Groundwater management and salinity prevention
- Typical aspects of many of these projects involve workshops, field days and site tours
- Australian native grains for food, culture and the environment.



Landcare
New South Wales

For more information please visit
landcarensw.org.au

Phone 02 8339 4816

Email invest@landcarensw.org.au

