

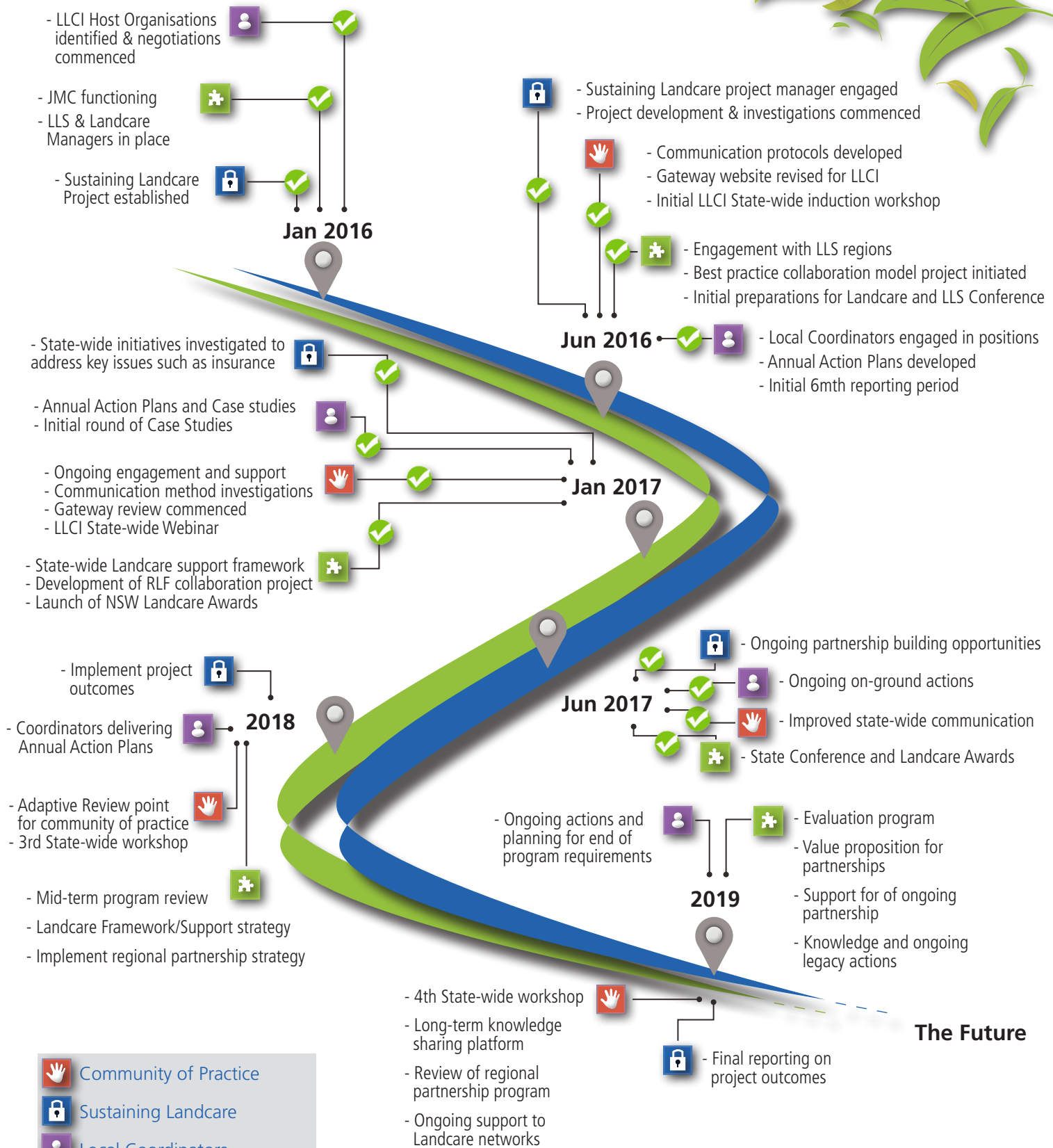


# Local Landcare Coordinator Initiative Working for a Sustained Landcare

## A Snapshot of Progress



# Local Landcare Coordinator Initiative – Road Map



- Community of Practice
- Sustaining Landcare
- Local Coordinators
- Management & Partnerships



## Local Landcare Coordinators – On Ground and Delivering

A network of locally-based coordinators has been established, providing critical support to local Landcare groups. Delivering strategically aligned programs as well as providing links to the whole Landcare community and to Government.

They are building the capacity and connectedness of their local groups and networks to stimulate on ground change. Many of the coordinator positions leverage on other funding sources from Local Land Services, Government and Councils to expand the value of the Local Landcare Coordinator Initiative beyond its initial capacity or intent.



**34 Host Organisations**  
**60 0.5 EFT packages**  
**71 Local Coordinators**



**59 Female Coordinators**  
**12 Male Coordinators**



**\$7.2 million directly**  
**into local economies**  
**between 2015 & 2018**



**>\$12 million over life of**  
**program in employment**



“Our coordinator’s  
capacity to serve  
the community has  
grown...”

*(NSW Farmers Central  
Coast Horticulture Branch)*



## Local Landcare Coordinators Achieving – In Their Words

A key outcome of the Local Landcare Coordinator initiative was to boost the ability of local Landcare groups and networks to be able to support community driven efforts in protecting the environment, the vitality of agricultural industry and to support the social fabric of community caring for the land.



**86%**

**Groups supported reporting improved capacity to address social, agricultural and environmental issues**

*“The LLCI program is proceeding well. We are reaching a broad range of people and better able to support our member groups. The flexibility of the program has allowed our organisation to direct its activities to best suit the needs of our local community”*

Richmond Landcare - North Coast NSW

*“We have benefitted from hosting a Landcare Coordinator by providing information to our members, assisting in the delivery of activities and meetings. In addition Erika has provided information and assistance to groups and that is not available from other sources to community members that are not members of the RGA. In doing this she has assisted in improving the image of the RGA as an organization that supports the broader community”*

Rice Growers Association - Murray Landcare Region

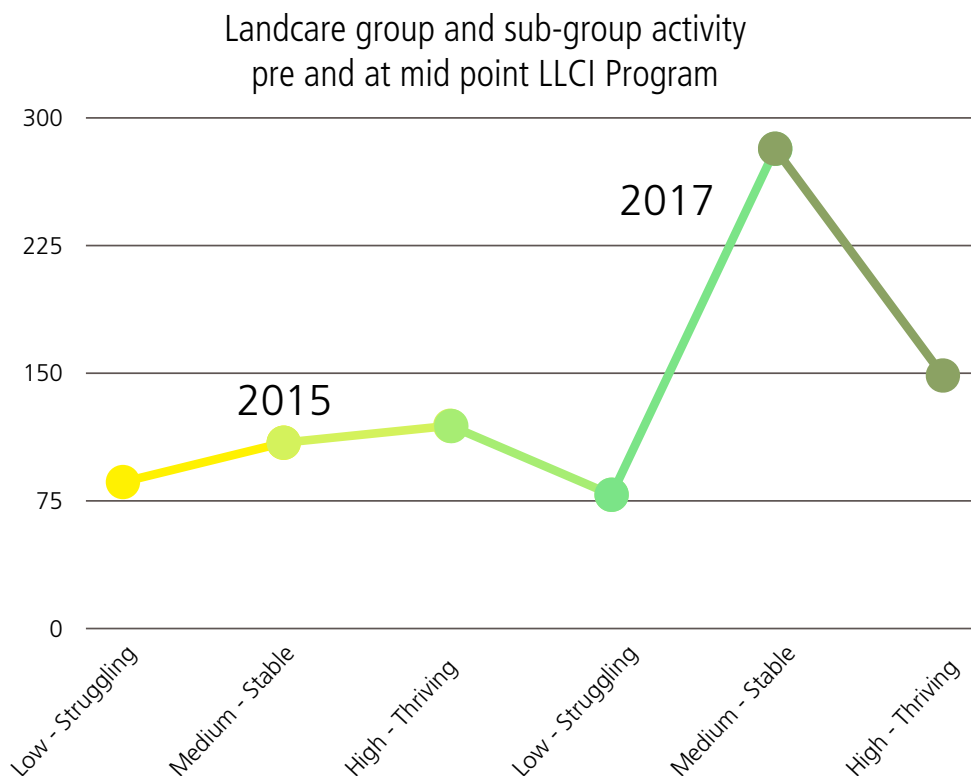


Engaging young  
Landcarers and  
Indigenous  
Landcarers continues  
to be a priority of the  
LLCI

Photo: Intrepid Landcare Retreat Cultural Talk (South Coast Landcare)

## Local Landcare Coordinator Initiative – Increasing Capacity

There is a distinct and obvious trend in the increased capacity and health of groups across NSW enabled by this program including an increase in the number and variety of groups that have emerged as a result of this improved resilience.



*“Identifying the skills necessary (to improve capacity) has increased the working relationship with other Landcare networks in our region”*

*“We have just not had the human resources until the LLCI”*

(Comments from Report Card 1 - 2017)

(Source: LLCI Host Organisation Applications 2015 and Report Card 1 2017  
NB: Not complete data set, indicates trend)

## Community of Practice – Improving Connectivity and Support

*“They are topical, provide great networking and resource sharing opportunities”*

South East Landcare

*“An ongoing opportunity to share experiences with the other coordinators and see how they are implementing things”*

Watershed Landcare

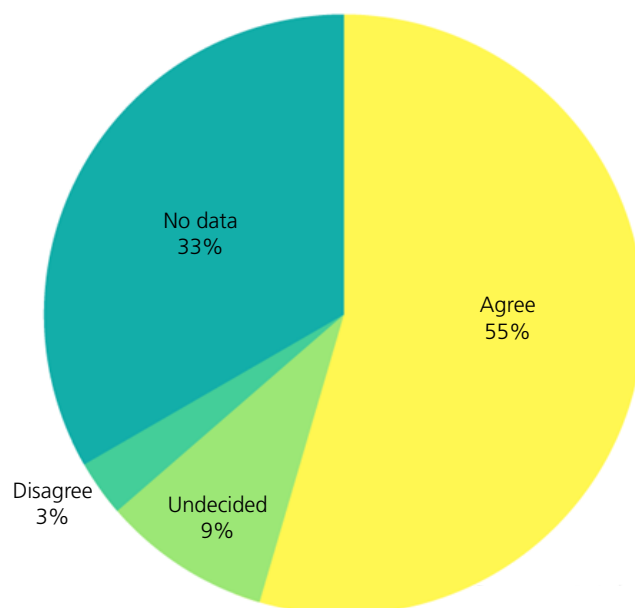
*“Increased awareness of Western Landcare has ultimately led to a greater number of groups set up across the region and stronger governance for current groups. Meeting with and understanding the reality of Landcare and Rangecare”*

Western Landcare NSW

*“Our coordinator’s capacity to service the Landcare community has grown through ongoing interaction with the farming and wider community, broadening her understanding of the needs and capacity of the community”*

NSW Farmers Central Coast Horticulture Branch

Regional Networks reporting improved connectivity



Question: We have increased the number of partnership activities/projects with one or more of the other participants in our Regional Community of Practice.

(Source: Report Card 2 2017 - 23 responses from all host organisations)

# Sustaining Resourced and Resilient Landcare Support

For the future of Landcare to thrive it needs a more resilient foundation and on going support.

That is the challenge given to the Sustaining Landcare Project to overcome. This component of the Local Landcare Coordinator Initiative is focused on building a resourced support hub that can respond to the needs of local Landcare while attracting novel and secure funding sources.



## Funding

### NSW Container Deposit Scheme

Landcare NSW has secured a contract as the Regional Audit Partner for the scheme. Opening up a range of fund raising opportunities.



## 154 Members

### Formal Membership Program

Landcare NSW has developed a formal membership program with access to a funded Member Services Officer



## Insurance

### A statewide approach

Landcare NSW has secured a statewide approach to insurance, giving members access to smart, cheaper and better insurance.



## Structure

### Modernising the business

Landcare NSW has mapped out a new, modern organisational structure and has appointed its first Chief Executive Officer.

## 2017 NSW Landcare and Local Land Services Conference

The 2017 Landcare and Local Land Services Conference was a great success and a key outcome of the program. One of the big goals of the Conference was to bring Landcarers and Government together to connect, share and learn.

**344**  
Delegates

**68**

Local Land  
Services Officers

**67**

Landcare Groups  
Represented

155 Landcarers

**13**

Aboriginal Groups  
Represented

21 Indigenous  
Landcarers

**8**

Education  
Providers

12 Reps

**17**

Government  
Agencies

36 Officers

**32**

Other  
Organisations

46 Delegates

## The Big Issues

- The partnership between Landcare and Local Land Services at local, regional and state scales.
- Linking traditional Landcare with Aboriginal Landcare and Traditional Ecological knowledge and practices.
- Building the connection between all forms of Landcare from Dunecare to Bushcare and Sustainable Agriculture.

*“It was the first time that you could sense a real collaboration, at a state-wide level, between Local Land Services and Landcare”*

*“It was a very professional platform to present the best of Landcare and Local Land Services. It was great to see so many Local Land Services staff there building relationships with Landcarers”*

Feedback given by Conference attendees



# Local Landcare Coordinator Initiative – Landcare Telling its Story

Landcare has to get better at “telling its story” both amongst itself and to everyone else. The Local Landcare Coordinator Initiative is focussing on empowering Landcarers to tell their story, share their experiences and to learn from each other.



# 180

## New Case Studies

Landcare Coordinators and Groups can now develop case studies directly through the Landcare Gateway.

The target is now being greatly exceeded, with an upward trend in not only the number of case studies but also in the quality of them.



## A Continued Focus on Overcoming the Challenges Facing Landcare

The challenges facing Landcare are complex, broad and varied in scale. The program continues to focus on helping and empowering Landcare to face and overcome their challenges.

**Question:** What are the current key challenges your organisation in working to overcome and is the Local Landcare Coordinator Initiative helping to overcome these challenges? Are you seeing progress?

*“Developing strategies for drawing on a greater and more diverse volunteer base. Progress is being made. The time required to fulfill the organisations admin and governance requirements is great.*

*If the coordinator contributes to this task, with only 18.5hrs week, there is a definite reduction in time spent engaging with the community.*

*Trying to move away from adhocery, to building a workable action plan, and finding suitably skilled members of the community to provide support to for planning and delivery”*

Far South Coast landcare Association

*“The key challenge in our area is adapting the results from research done in other regions to our locality. Our region tends to get over-looked with regard to research. In the past, NSW DPI provided support to our region, but as staff leave DPI and are not replaced, there has been a loss of technical support.*

*This challenge underpins everything that we are delivering and plan to deliver within the LLCI program”*

NSW Farmers Central Coast Horticulture Branch

*“Our region is undergoing significant change for a range of reasons. Larger farms, less farmers, variability of irrigation water supply, understanding water markets and the complexity of irrigation farm management are the main challenges communities face. Through Erika's (LLC) role we are able to improve the value for membership that our members receive. Erika's connection with Murray Landcare enables our organization to collaborate, find and help secure funds for important projects that build skills and knowledge of our regional community. These projects then assist the adoption of new farm business and sustainable land management practices that help overcome these challenges. In terms of farmer confidence in farm decision making and business performance progress is being made”*

Rice Growers Association - Murray NSW

## Contacts

**Chris McCulloch** | NSW Landcare Program Manager  
0424 061 164 | [chris.mcculloch@lls.nsw.gov.au](mailto:chris.mcculloch@lls.nsw.gov.au)

**Natasha English** | NSW Landcare Coordinator  
0423 015 291 | [nenglish@landcarensw.org.au](mailto:nenglish@landcarensw.org.au)

**Sonia Williams** | NSW Landcare Facilitator  
0411 113 590 | [swilliams@landcarensw.org.au](mailto:swilliams@landcarensw.org.au)

**Melissa Joseph** | Sustaining Landcare Project Manager  
0414 499 666 | [mjoseph@landcare.org.au](mailto:mjoseph@landcare.org.au)

**Leigh McLaughlin** | Policy and Partnerships  
0412 234 832 | [lmclaughlin@landcare.org.au](mailto:lmclaughlin@landcare.org.au)

**[www.landcare.nsw.gov.au](http://www.landcare.nsw.gov.au)**

First published December 2017

### Acknowledgements

Local Land Services and Landcare NSW would like to acknowledge both organisations and the broader Landcare Community in NSW for the support given to the Local Landcare Coordinator Initiative.

The Initiative would like to thank the NSW Government and acknowledge in particular the Honourable Niall Blair, MLC, Minister for Primary Industries, Minister for Regional Water, and Minister for Trade and Industry.



The Local Landcare Coordinator Initiative is funded by the NSW Government and is supported through the partnership of Local Land Services and Landcare NSW



**Landcare**  
New South Wales