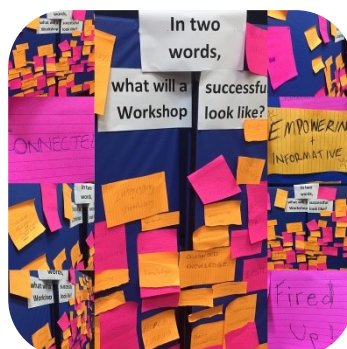
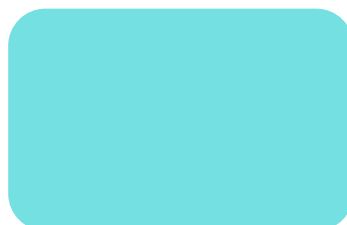




Landcare NSW Inc

2015/16 Annual Report



FROM THE CHAIR



The strategic plan developed by Landcare NSW just over 18 months ago has guided the direction and activities of Landcare NSW, and we are beginning to see real dividends from the work of the Landcare NSW Councillors, our small band of dedicated staff, and the broader involvement of the Landcare community. I cannot thank them enough for their input, effort and support across the past 12 months.

Landcare NSW is guided by the input of the most important members of Landcare – those “on the ground”. Their input comes through the biennial Muster, from regional representatives, and other involvement in the activities of Landcare NSW. We work on behalf of local Landcarers, we represent their views, we seek resourcing to underpin their operations and communicate to a number of grant programs so as to improve the access of Landcare groups to the funding that enables successful on-ground activities.

In 2015 Landcare NSW secured support from all NSW major political parties for a renewed Landcare program, and the NSW Coalition Government committed \$15m over 4 years for the infrastructural support of Landcare.

Landcarers know that Landcare provides an enormous return on investment for the government and other investors, sometimes quadrupling the value of each invested dollar. The leverage of partner funds is a result of Landcarers and their local community support in the form of very real cash contributions of landholders, the enormous number of volunteer hours of our groups members, and donations of goods and services from local businesses.

Landcare has a renewed future – and it's up to us all to capitalise upon the tremendous steps achieved in the past 12 months. I call on each and every Landcarer, and in particular the Committee members – that band of tireless volunteers who not only give up their time to “do Landcare”, but also attend to the behind the scenes requirements – to make sure we are constructively pulling together for the greater good of Landcare across NSW.

Landcare is about working together – regardless of the scale – be it a local on-ground project, a district or regional level committee, or state or national level partnership.

There have been challenging times in the past – and there will be in the future – but it is only our combined efforts that will ensure we get through these challenges in a way that makes us stronger. Our strength is in unity and 60,000 hands speaking with one voice is a force for change. But what does “one voice” mean – it isn't relying on Landcare NSW alone, it's ensuring at the regional, district, and local scale we, through our own operations, demonstrate and communicate the same message on the value of Landcare and the importance of partnerships – within and outside of Landcare.

I look forward to continuing and building on the work of the past year, as together we forge a positive and lasting future for Landcare in NSW.

Rob Dulhunty | **Chair**
Landcare NSW Inc



Many Hands, One Voice
Witand Witsand Witand Witsand

LANDCARE NSW

www.landcarensw.org.au
2015/16



60 000 NSW LANDCARERS

Landcare NSW supports the resourcing & operation of the Landcare Groups in NSW - the efforts of those Landcarers make a significant gain in conservation and sustainable agriculture across NSW each year

\$15M SECURED

Landcare NSW secured \$15million over 4 years to support the operation and effectiveness of Landcare groups in NSW



WORKSHOPS

Landcare NSW delivered over 25 workshops and events to more than 1200 participants dedicated to advancing Landcare groups and initiatives in NSW

A STRONG VOICE

Landcare NSW has represented the interests of Landcare at over 15 opportunities in 2015/16, through representation, submissions and partnerships



COMMUNICATION

Landcare NSW supported groups with 27 Fact Sheets, 26 Policy Templates and 18 E-News publications during 2015/16

THANK YOU

Landcare NSW would like to thank our 25 volunteer Councillors, including 8 Executive Committee. We also thank our project partners and supporters. And a heartfelt thanks to all Landcarers across NSW for the amazing work they do.

LANDCARE NSW

VISION

The result of our collective efforts will be to create...

A viable and resilient Landcare community contributing as a valued partner to a range of community, natural resource management and agricultural outcomes.

MISSION

We will work...

To serve community Landcare in NSW by providing a representative voice, member services and support.

KEY PROJECT OVERVIEW | Local Landcare Coordinator Initiative

Responding to the requests from the Landcare community, **Landcare NSW was successful in securing funding for the placement of over 60 Local Landcare Coordinators** across the State (see map below).

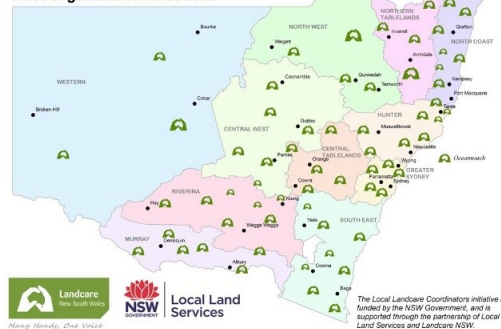
The range of activities conducted during 2015/16 at the group, district and regional scale is astounding. There are good news stories ranging from increased membership, reaching out to new target audiences, to local support and resourcing for Landcare activities and operations. These activities have been promoted by the Groups on the Landcare Gateway website, providing a central hub where Landcarers can connect, share and learn from each other.

There have been a number of community of practice activities this year, including teleconferences, training days and partnership forums. The Regional Landcare Facilitators (RLFs) have been active in supporting the delivery of these, and Sonia Williams (State Landcare Coordinator, Landcare NSW) has been privileged to attend a number of them over the past year. Based on the input from these events and your reporting,

Landcare NSW has commenced work on updating their database and building a map of the various networks, groups and their linkages.

In addition Landcare NSW has supported a number of groups with governance and employment information and targeted trouble-shooting, and provided a monthly e-bulletin to all RLFs and Coordinators to distribute through their networks with current information and opportunities.

Local Landcare Coordinator Initiative: Host Organisation Locations



ABOVE: Landcare Coordinator locations across NSW.

HIGHLIGHTS

| Landcare Coordinator Workshop

Local Landcare Coordinators (LLCs) are part of a connected network across NSW and the first step in developing this network was achieved by bringing the Coordinators and their host organisations together at the Induction and Training Workshop in early 2016 at Stockton Beach. **170 participants** attended including Local Landcare Coordinators, host organisations, Regional Landcare Facilitators and Local Land Services (LLS) staff.

Highlights included; Minister Blair speaking to the group via video about the importance of the program being community owned and the Chair of the LLS Board of Chairs, Tim de Mestre speaking about value of Landcare.

What people are saying:

As an 'old hand' in Landcare, I want to remind everyone that.... we must not forget the magic of Landcare is that people draw on their intrinsic motivation to participate. David Henderson, Southern New England Landcare Board member.

The energy and atmosphere of the meeting took me back to an earlier era when I was a new [to] Landcare... the sense of enthusiasm, the opportunities ahead. Erlina Compton, General Manager Western LLS.

| Muster

The 2015 NSW Landcare Muster was held as part of the 2015 State Landcare and Local Land Services Conference, themed "From the Ground Up". Held in Orange (NSW), the Muster was attended by **227 passionate Landcarers** and supporters from throughout NSW. Participants represented a diverse range of groups including Bushcare, Coastcare, Friends of and Landcare groups.

A number of **key themes** were highlighted during the 2015 Muster including;

- * Increasing youth engagement,
- * Increasing opportunities to work with and learn from Traditional Owners,
- * Partnerships and communications with government agencies and other natural resource management groups,
- * Funding support and opportunities for leveraging investment,
- * Improving governance of Landcare through training opportunities and increased support,
- * Improved communication of the expertise and achievements of Landcare at all levels,
- * Representation and advocacy of Landcare with government to inform policy decisions.

| Biodiversity Workshops

Landcare NSW, through the support of the NSW Environmental Trust, delivered a series of **eight workshops** across NSW during the submission phase of the NSW Biodiversity Reforms.

The workshops showcased biodiversity projects undertaken by local groups, presented biodiversity initiatives from government agencies, updated Landcarers on latest research as well as providing information about the new draft Biodiversity Legislation, from a wide range of sources including OEH, Local Land Services Environmental Defenders Office, NSW Farmers, and the Nature Conservation Council. A webinar was also held to ensure Landcarers from across NSW were able to be involved.

No specific policy position was adopted by Landcare NSW, rather Landcare NSW undertook to ensure the many views of Landcarers were represented in a submission to the reform process. Landcarers (groups and individuals) were also encouraged to make submissions to ensure a full range of views were represented.



SHOWCASE EVENTS OF THE YEAR

| Parliamentary Friends of Landcare

A highly successful ‘Evening with Landcare’ provided a unique opportunity for **Members of Parliament (MPs) to meet grassroots Landcarers** and engage with issues facing agriculture, the environment and rural communities in NSW. Held at Parliament House on 10 May 2016, the event was organised by the NSW Parliamentary Friends of Landcare (PFL), a non-partisan group formed in 2015 to enable MPs to show their support for Landcare in their local communities.

The event was attended by around **65 people**, with Landcare NSW Councillors, Local Coordinators, Landcare volunteers and senior departmental representatives mingling with MPs from all political parties and all parts of NSW.

PFL is chaired by the Hon. Katrina Hodgkinson, who hosted the evening. Ms. Hodgkinson noted the role of Landcare and Bushcare saying, *“All these different types of caring for our land and caring for our environment are very, very important.”* She also highlighted the importance of the partnership between Local Land Services and Landcare NSW.

Deputy Premier the Hon Troy Grant and Minister for Agriculture Hon Niall Blair addressed the audience, highlighting the value of Landcare and the strength of the Local Landcare Coordinator Initiative. Deputy Premier Troy Grant MP said, *“I think Landcare has an enormously exciting future and a vital role in our natural resources management of this State into the future.”*

To thank them for their support of Landcare, MPs were given a native seedling to take away and plant in their electorate. These were provided by Habitat Nursery, a community not for profit nursery in the Sydney suburb of Ryde – part of the Greater Sydney Landcare Network.



ABOVE: (L to R) The Hon. Richard Colless MLC, Hon. Katrina Hodgkinson MP, Hon. Niall Blair MLC and Rob Dulhunty (far right) (Chair, Landcare NSW) at Parliamentary Friends of Landcare event evening.

| Celebrating Philanthropy Week

December 2015 saw the conclusion of the Vincent Fairfax Family Foundation funded project which over the previous 18 months enabled Landcare NSW to develop its strategic plan, and employ a full time Executive Officer to commence the initiatives highlighted in the plan. The results of this philanthropic partnership, were celebrated with the release of a short film and an event to highlight the achievements from the partnership. Landcare NSW thanks the Foundation for Rural and Regional Renewal and the Australian Governments Department of Social Services for their funding support of this Philanthropy week activity.

| With thanks to our volunteer Councillors

The following representatives are endorsed as Council members of Landcare NSW. Grey highlighted members indicate Executive Committee. For more information on Executive and Council members please visit: www.landcarensw.org.au/about-us/council-members-2/

| | | |
|---------|-----------|------------------------------------|
| Robert | Dulhunty | Volunteer Chair |
| Steph | Cameron | New England North West Landcare |
| Bev | Debrincat | Greater Sydney Landcare |
| John | Hughson | Hunter Region Landcare |
| Keith | Hyde | LachLandcare |
| Bob | Jarman | North Coast Regional Landcare |
| Chris | Scott | Mid Coast to Tops Landcare |
| Dale | Stringer | Murray Region Landcare |
| Don | Bruce | Central Tablelands |
| Daintry | Gerrand | North Coast Regional Landcare |
| Louise | Greenaway | Greater Sydney Landcare |
| Stephen | Harvey | New England North West Landcare |
| John | McGrath | Murrumbidgee Landcare |
| Stuart | Mosely | Western Landcare NSW |
| Glenys | Patulny | Murrumbidgee Landcare - ACT |
| Bill | Pigott | South East Landcare |
| Chris | Post | South East Landcare |
| Jen | Quealy | Special Skills - Marketing |
| Megan | Rowlatt | Special Skills - Youth Engagement |
| Martin | Royds | South East Landcare |
| John | Ryan | Central West NRM Working Group |
| Sue | Salvin | North Coast Regional Landcare |
| Tony | Slade | LachLandcare |
| David | Walker | Special Skills - National Landcare |
| Hunter | White | Central Tablelands |

| With thanks to this year's Landcare NSW supporters:











